



DHI-ITC237-PW1A-IRZ
Web Operation Manual

Version 1.0.0
Dahua Technology CO.,LTD

Important Safeguards and Warnings

1 . Electrical safety

All installation and operation here should conform to your local electrical safety codes.

The power shall conform to the requirement in the SELV (Safety Extra Low Voltage) and the Limited power source is rated 90-240V.

We assume no liability or responsibility for all the fires or electrical shock caused by improper handling or installation.

2 . Transportation security

Heavy stress, violent vibration or water splash are not allowed during transportation, storage and installation.

Please keep package material well in case you need to send it back to your local retailer or manufacturer for maintenance work.

Non-original package material may result in device damage during the transportation.

3 . Installation

Do not apply power to the camera before completing installation.

Please install the proper power cut-off device during the installation connection in case there is any emergency situation.

Always follow the instruction guide the manufacturer recommended.

4 . Qualified engineers needed

All the examination and repair work should be done by the qualified service engineers.

We are not liable for any problems caused by unauthorized modifications or attempted repair.

5 . Environment

This series camera should be installed in a cool, dry place away from direct sunlight or strong light, inflammable, explosive substances and etc.

The working temperature ranges from -30°C ~ to $+60^{\circ}\text{C}$. Please keep it away from the electromagnetic radiation object and environment.

Please keep the sound ventilation.

Do not allow the water and other liquid falling into the camera.

Usually we recommend thunder-proof device to prevent thunder strike.

The GND port of the product shall be grounded to further enhance the reliability of the device.

6. Accessories

Be sure to use all the accessories recommended by manufacturer.

Before installation, please open the package and check all the components are included.

Contact your local retailer ASAP if something is broken in your package.

7. Daily Maintenance

Please shut down the device and then unplug the power cable before you begin daily maintenance work.

Use the dry soft cloth to clean the device.

If there is too much dust, please use the water to dilute the mild detergent first and then use it to clean the device. Finally use the dry cloth to clean the device.

Table of Contents

1	Live.....	1
1.1	Log in.....	1
1.2	Video Bit Stream Bar	4
1.3	Preview Window Switch.....	4
1.4	System Menu	5
1.5	Common Function Bar	6
1.6	Monitor Window Switch.....	6
2	Query.....	8
2.1	Picture Query	8
2.2	Record Query.....	8
2.2.1	Record.....	8
2.2.2	Water Mark	9
3	Configure.....	10
3.1	ITC	10
3.1.1	Lane Property	10
3.1.2	Snapshot	11
3.1.3	Intelligence Default	12
3.1.4	Intelligence Default	17
3.1.5	Snap Cutout.....	17
3.1.6	White List.....	18
3.2	Camera	20
3.2.1	Attribute	21
3.2.2	Video	23
3.3	Network.....	28
3.3.1	TCP/IP	28
3.3.2	IP Filter	29
3.4	Event.....	29
3.4.1	Relay-out	29
3.4.2	Abnormity	30
3.5	Storage	31
3.6	System.....	31
3.6.1	General.....	31
3.6.2	Account.....	33
3.6.3	Default	38
3.6.4	Import/Export	38
3.6.5	Auto Maintain.....	39
3.6.6	Upgrade.....	40

3.7	Information.....	40
3.7.1	Version.....	40
3.7.2	Log.....	41
3.7.3	Online User.....	42
4	Logout.....	43

1 Live

1.1 Log in

Open IE and input HD intelligent traffic camera IP address in the address column. For example, if your IP is 192.168.1.108, then please input http:// 192.168.1.108 in IE address column. See Figure 1-1

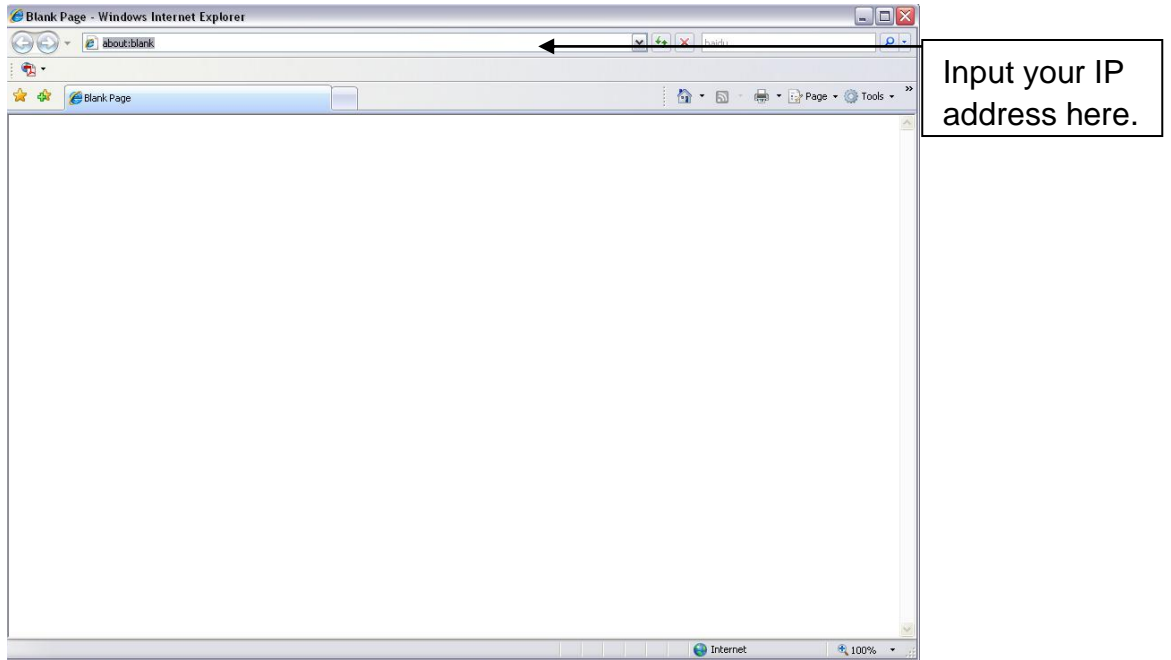


Figure 1-1 IE

System pops up warning information to ask you whether install webrec.cab control or not. Please click yes button.

If you can't download the ActiveX file, please modify your settings as follows. See Figure 1-2.

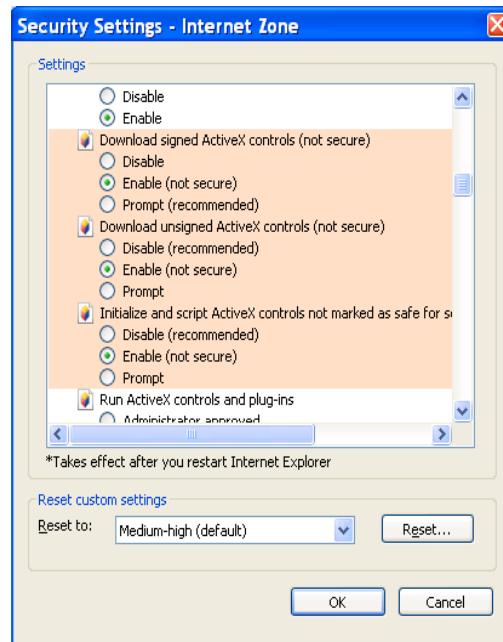
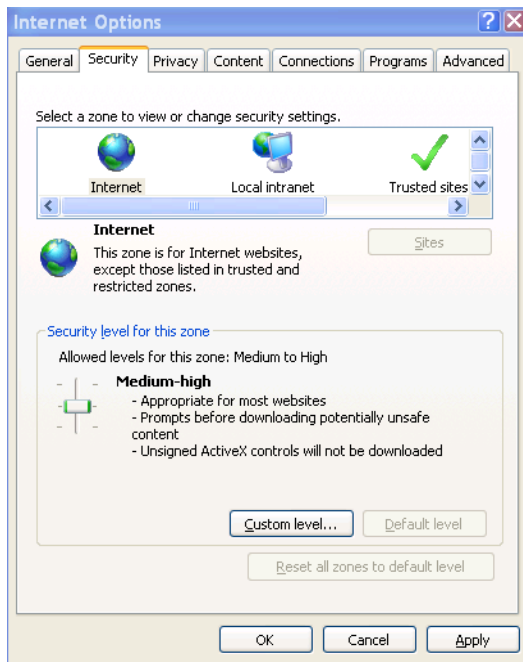


Figure 1-2 Security Settings

After installation, the interface is shown as below. See Figure 1-3.

Please input your user name and password.

Default factory name is **admin** and password is **admin**.

Note: For security reasons, please modify your password after you first login.

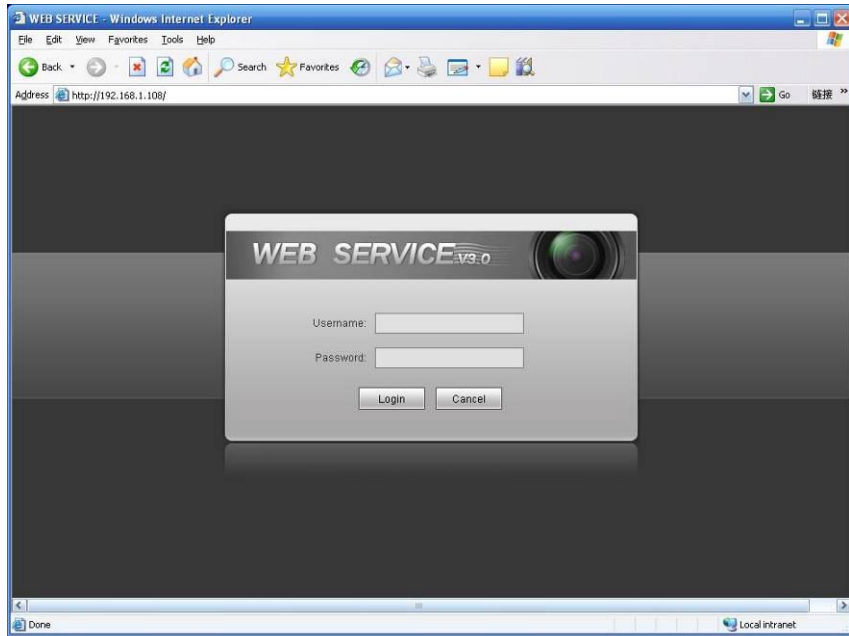


Figure 1-3 Login Interface

After you logged in, HD intelligent traffic camera web main interface is shown as in Figure 1-4.

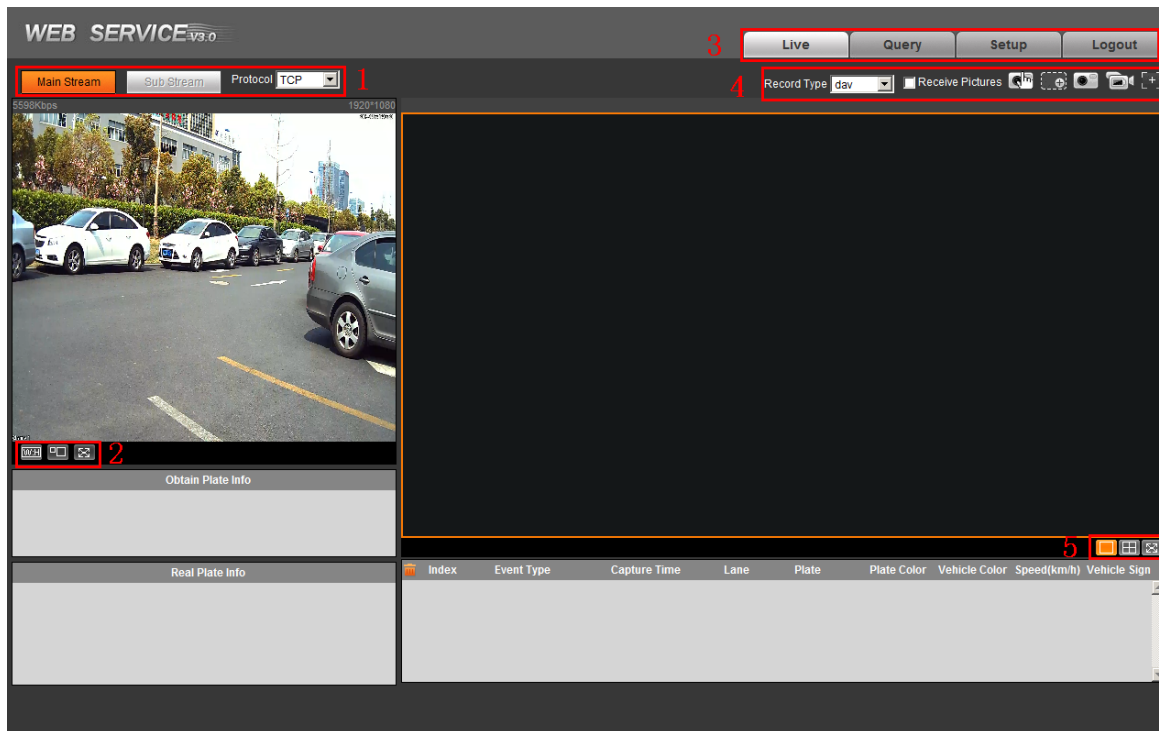


Figure 1-4 Web Main Interface

There are five sections:

- Section 1: Video bit stream bar
- Section 2: Preview window switch
- Section 3: System menu
- Section 4: Common function bar
- Section 5: Monitor window switch

1.2 Video Bit Stream Bar

The video bit stream bar interface is shown as in Figure 1-5.

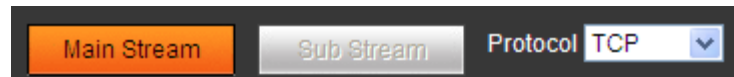


Figure 1-5 Video Bit Stream Bar

Please refer to the following sheet for detailed information.




Parameter	Function
Main stream	You can use main stream to record video record, network monitor function under normal network environment. You can set resolution within its supported range.
Extra stream	It is a substitute for main stream under insufficient band width.
Protocol	Select video monitoring protocol, currently support TCP only.

1.3 Preview Window Switch

The preview window switch interface is shown as in Figure 1-6.



Figure 1-6 Preview Window Switch

- ---- Aspect ratio, adjust image to original size or best fit.
- ----Window switch to large window and display adjusting window. See Figure 2-8.
-  is full screen button. To exit full screen, double click or press Esc.

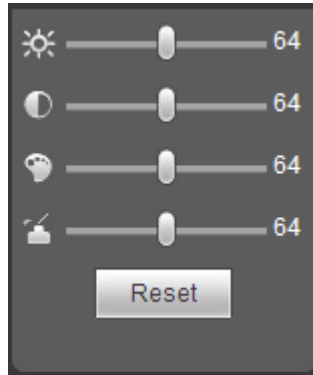


Figure 1-7 Adjusting Window

Note:

- All the operations here apply to WEB end only.
- Please go to “Setup->Camera->Attributes” to set.

Please refer to the following sheet for detailed information.

Parameter	Function	
Video setup		It is to adjust monitor video brightness.
		It is to adjust monitor video contrast.
		It is to adjust monitor video hue.
		It is to adjust monitor video saturation.
Reset	Reset brightness, contrast, hue and saturation to system default values.	

1.4 System Menu

System menu is shown as in Figure 1-8.

Please refer to chapter 1 Live, chapter 2 Query, chapter 3 Setup, chapter 4 Logout for detailed information.



Figure 1-8 System Menu

1.5 Common Function Bar

The common function bar interface is shown as in Figure 1-9.

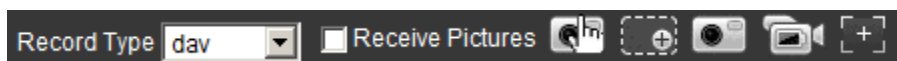


Figure 1-9 Common Function Bar

Please refer to the following sheet for detailed information.



Parameter	Function
Record Type	Select record type, default is dav.
Receive pictures	Check it to automatically receive pictures via snapshot, coil detect and video detect. Record plate, vehicle color, speed and other info and display them in window.
Manual snapshot	Click on the button to snapshot. Snapshots are saved based on setup in “Setup->Camera->Video->Path”.
Zoom in	Click on the button to zoom in with left mouse. Right click to exit.
Snapshot	Click on the button to snapshot current picture and save it.
Record	Click on the button to record. Record file is saved based on setup in “Setup->Camera->Video->Path”. Please refer to Chapter 4.2.2.5.
Easy Focus	Click Easy Focus to auto focus, or you can manually zoom in and focus. Zoom: Manually focus, zoom in/out. Focus: Manually focus make image clear.

1.6 Monitor Window Switch

The monitor window switch interface is shown as in Figure 1-10.



Figure 1-10 Monitor Window Switch

-  ----Display in single window.
-  ---- Display in four windows.

- ---- Display in full screen.

2 Query

2.1 Picture Query

Click query button, you can see an interface is shown as in Figure 2-1.

Click Open Local, select picture you want to verify and click Water Verify, then you can view the result. Select the picture, click Open to preview.

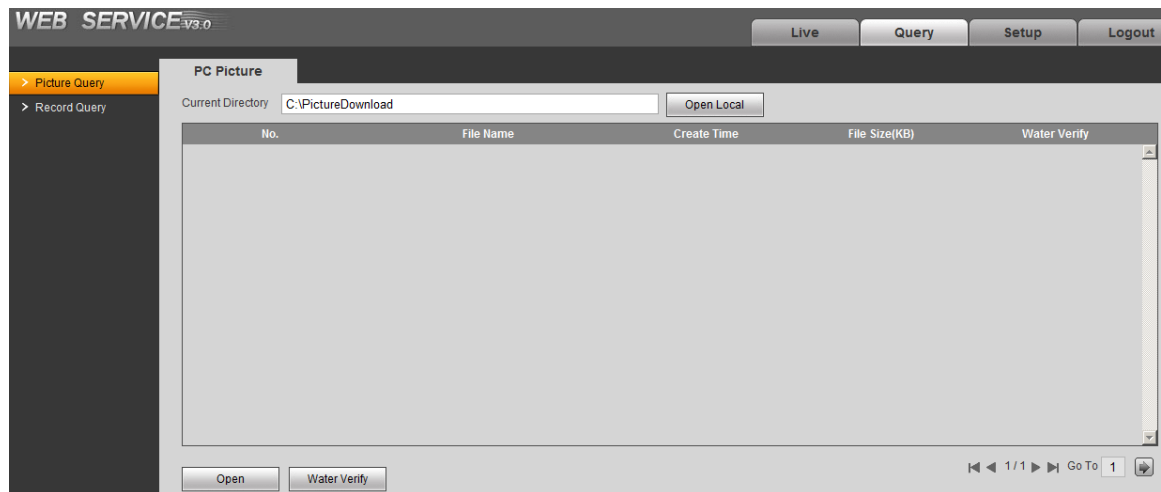


Figure 2-1 Picture Query

2.2 Record Query

2.2.1 Record

Click record query, you can see an interface is shown as in Figure 2-2.

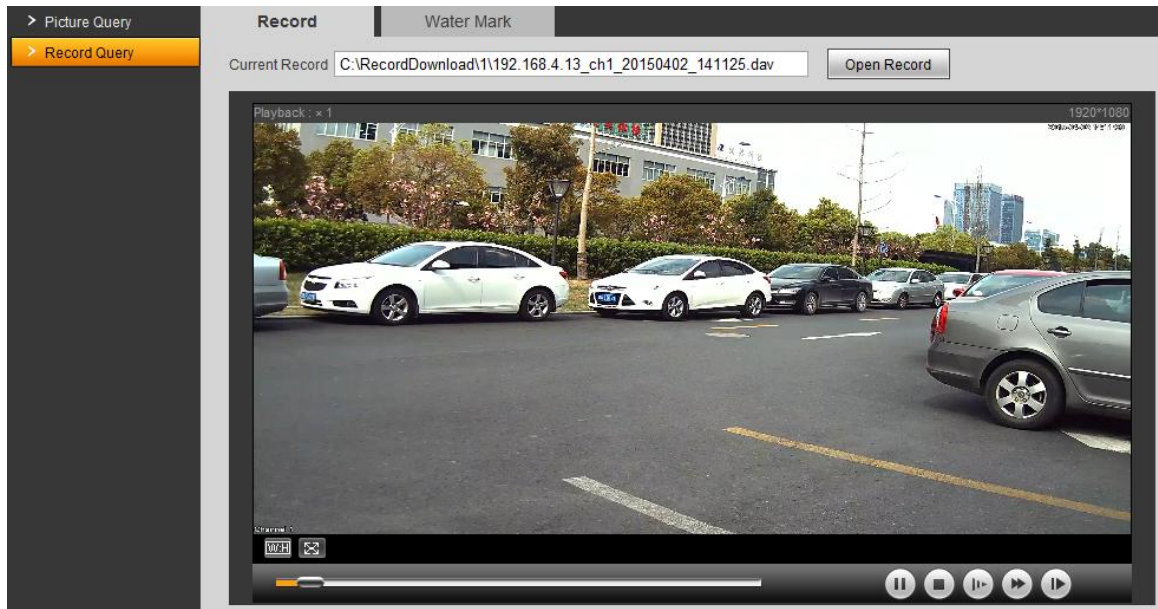


Figure 2-2 Record Query

2.2.2 Water Mark

Note:

Before user can use this function, he/she must enable water mark in Setup>Camera>Video, and set watermark content. Default watermark is :DigitalCCTV.

Select record file, click Water Mark, system shows progress of verifying and normal watermark. See Figure 2-3.

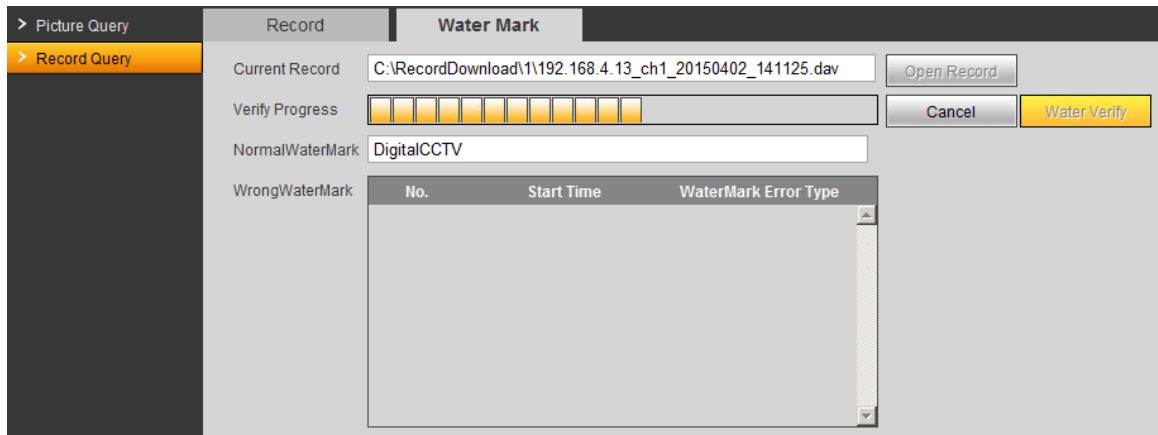


Figure 2-3

When it is complete, the page will show complete.

3 Configure

3.1 ITC

3.1.1 Lane Property

User shall set related parameter according to their need.

The lane property interface is shown as in Figure 3-1.

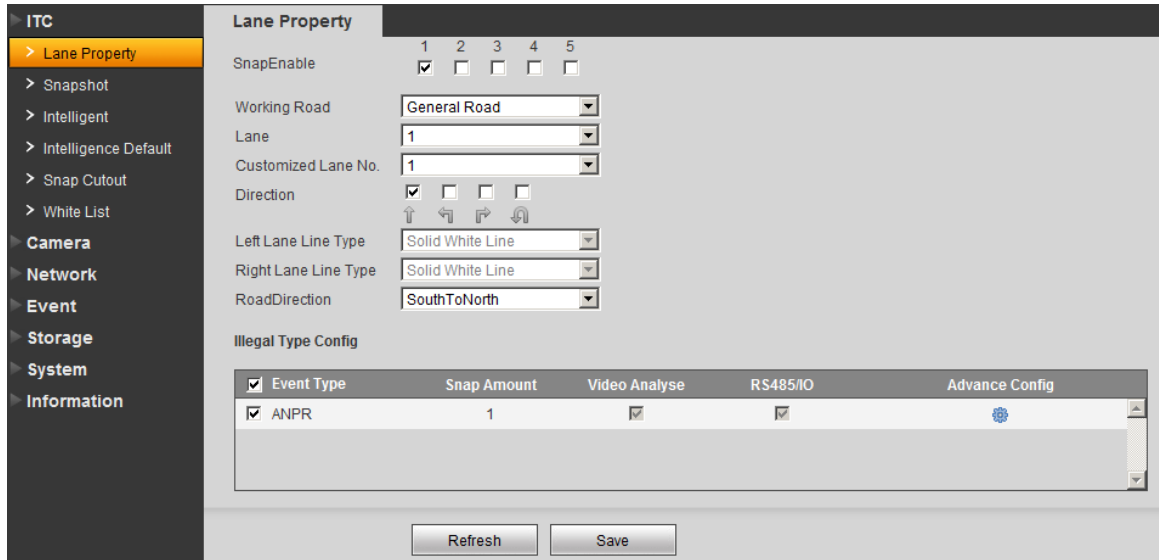



Figure 3-1 Lane Property

Please refer to the following sheet for detailed information.

Parameter	Function
Snap enable	Select lane to enable. The no. corresponds to actual lane no.
Working road	Select road type.
Lane	Select lane to snapshot.
Customized lane no.	Set different no. for each lane.
Direction	Select lane direction to snapshot.
Left lane line type	Solid white line by default.
Right lane line type	Solid white line by default.
Direction	Set vehicle direction.

Parameter	Function
ANPR	Set whether to snapshot vehicle at ANPR or not.

Click on  button in Illegal Type Config, you will see advance config interface in Figure 3-2.

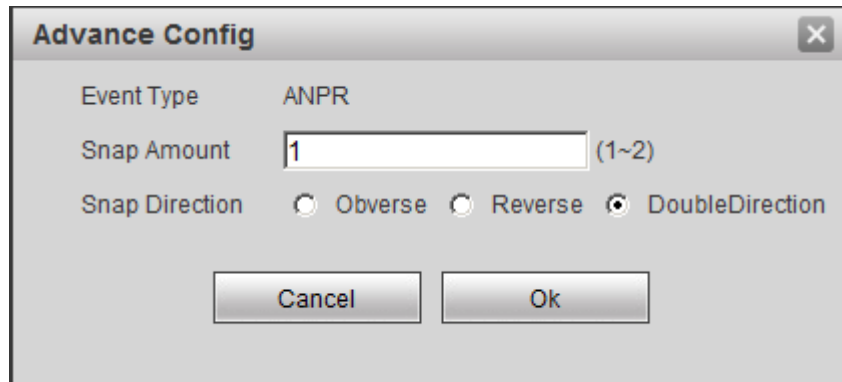


Figure 3-2 Advance Config

Parameter	Function
Snap Amount	<ul style="list-style-type: none"> Set number of snapshot.
Snap Direction	<ul style="list-style-type: none"> Check Observe to snapshot vehicle driving in correct direction only. Check Reserve to snapshot vehicle driving in retrorse direction only. Check DoubleDirection to snapshot vehicles in both directions at the same time.

3.1.2 Snapshot

The snapshot interface is shown as in Figure 3-3.

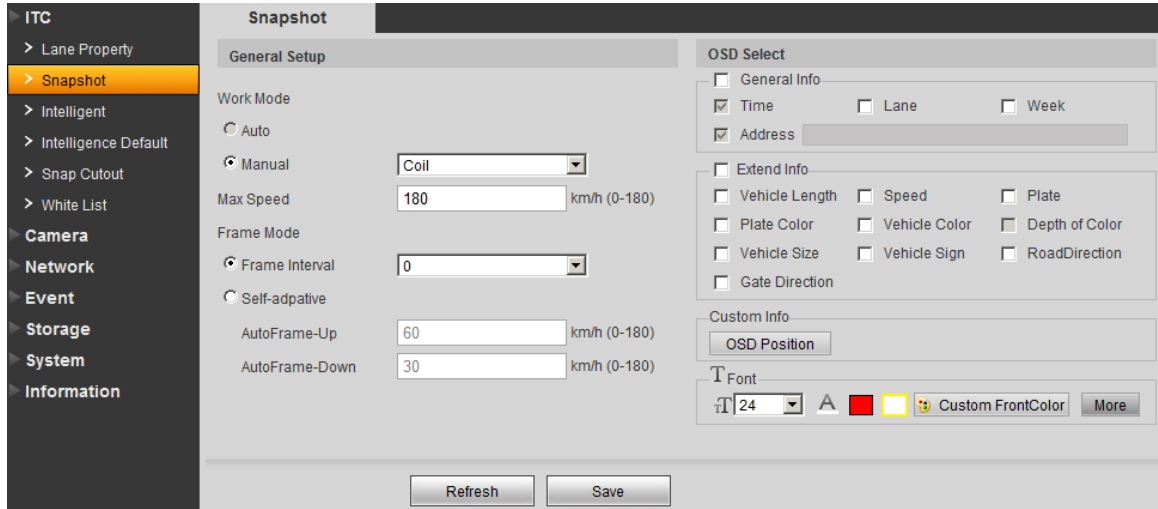


Figure 3-3 Snapshot

Please refer to the following sheet for detailed information.

Parameter	Function
General setup	Select auto or manual mode. Manual mode includes video trigger and coil trigger.
Work mode	Select frame interval or custom interval.
Max speed	Set max speed supported by device.
OSD select	Set OSD menu.
General info	Select OSD info displayed on picture border.
Address	Set device installation address, and this OSD will be displayed on picture border.
Extend info	Select OSD info to be displayed on picture border.
Font	Set OSD info font size, color.
Refresh	Click on refresh to receive the latest device parameters.

3.1.3 Intelligence Default

3.1.3.1 RS485/IO

The intelligence default interface is shown as in Figure 3-4.

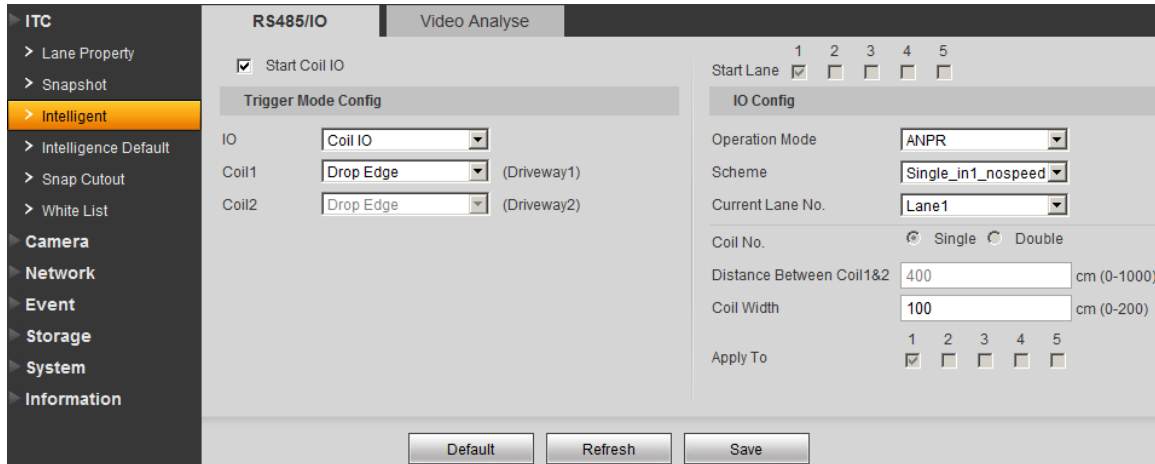


Figure 3-4 RS485/IO

Please refer to the following sheet for detailed information.

Parameter	Note
Start Coil IO	Select Start Coil IO enable option, to enable coil IO, may config trigger mode and IO.
IO	Select coil IO.
Coil X	Set each coil's trigger mode.
Operation Mode	Support ANPR mode.
Scheme	Include several typical combination of coil snapshot. ANOR mode: <ul style="list-style-type: none"> • Double_in2_nospeed: dual coils, when vehicle head enters the 2nd coil, snapshot • Single_in1_nospeed: single coil, when vehicle head or tail enters the coil, snapshot
Current Lane No.	Select different lanes to set corresponding coil parameters.
Distance Between Coil1&Coil2	Actual distance from centers of coil 1 to coil 2. Note: This value must match actual value, other speed measurement will not be accurate.
Coil Width	According to actual condition, set coil width.
Apply to	Apply config scheme of current channel to other channels.

3.1.3.2 Video Analysis

The video analysis interface is shown as in Figure 3-5.

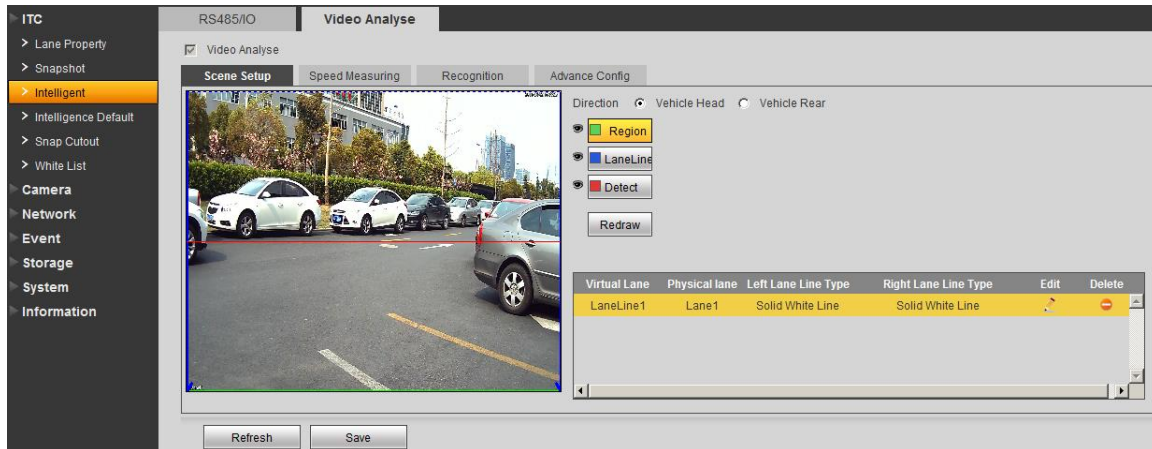


Figure 3-5 Video Analysis

Please refer to the following sheet for log parameter information.

Parameter	Function
Virtual lane	Select virtual lane no.
Physical lane	Set physical lane no. according to actual condition.
Region	Set detect region. Select and click on redraw to drawn region.
Lane line	<ul style="list-style-type: none"> • Draw lane according to actual condition. • Each lane requires two lines. • Arrow of lane represents moving direction. • Select and click on redraw to drawn region. • You can only draw in up/down direction.
Detect	<ul style="list-style-type: none"> • Draw border line to trigger snapshot which is similar to actual coil. When vehicle reach this line, snapshot will be triggered. • Detect line is available inside drawn region only. • Select and click on redraw to drawn region.
Vehicle head/vehicle rear	When you select front, lane arrow is downward. When you select rear, lane arrow is upward. These are vehicle moving direction with different representations.

The speed measuring interface is shown as in Figure 3-6.

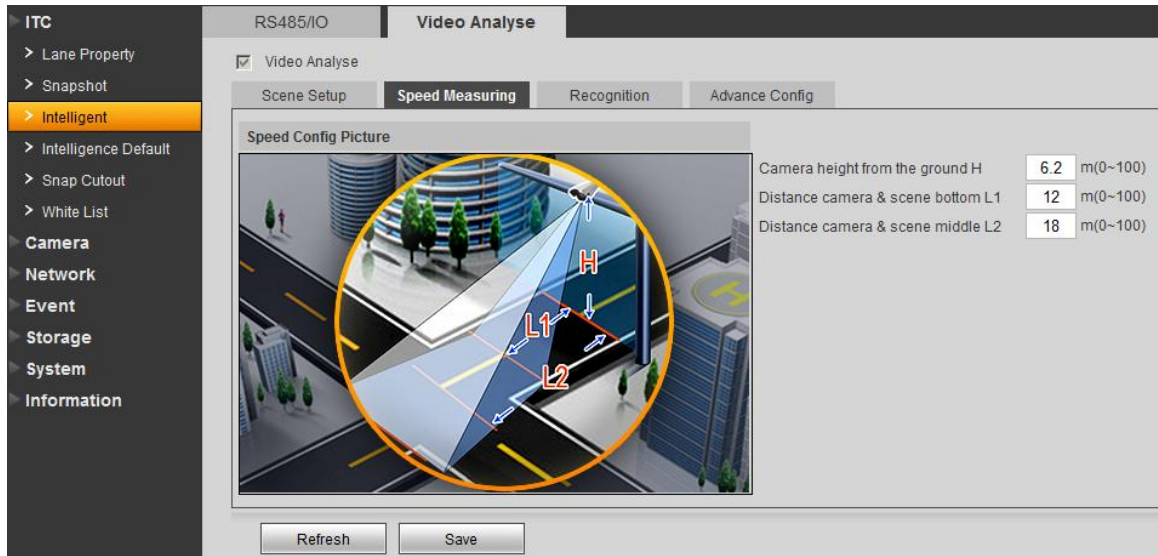


Figure 3-6 Video Analysis

Please refer to the following sheet for log parameter information.

Parameter	Function
H	This is camera height from the ground. Note: This value must match actual value; otherwise speed measure will be inaccurate.
L1	This is distance from camera to scene bottom. Note: This value must match actual value; otherwise speed measure will be inaccurate.
L2	This is distance from camera to scene median (yellow line). Note: This value must match actual value; otherwise speed measure will be inaccurate.

The recognition interface is shown as in Figure 3-7.

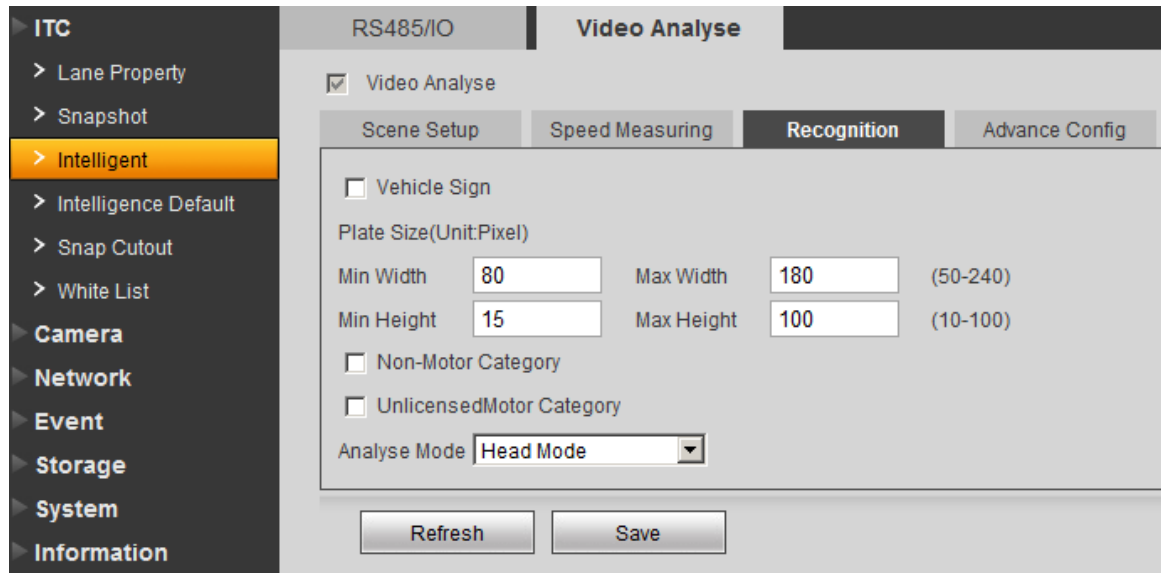


Figure 3-7 Video Analysis

Please refer to the following sheet for log parameter information.

Parameter	Function
Vehicle Sign	Select this parameter, it can recognize vehicle LOGO.
Plate Size	Set plate Min Height, Max Height, Min Width, Max Width, while only Min Width and Max Width are available for use.
Non-motorized vehicle snapshot	Select this parameter to snapshot non-motorized vehicle.
Unlicensed motor category	Select this parameter to snapshot unlicensed motors.
Analyse Mode	Select recognition mode, includes Head Mode, Tail Mode, Head Prior Mode, Tail Prior Mode.

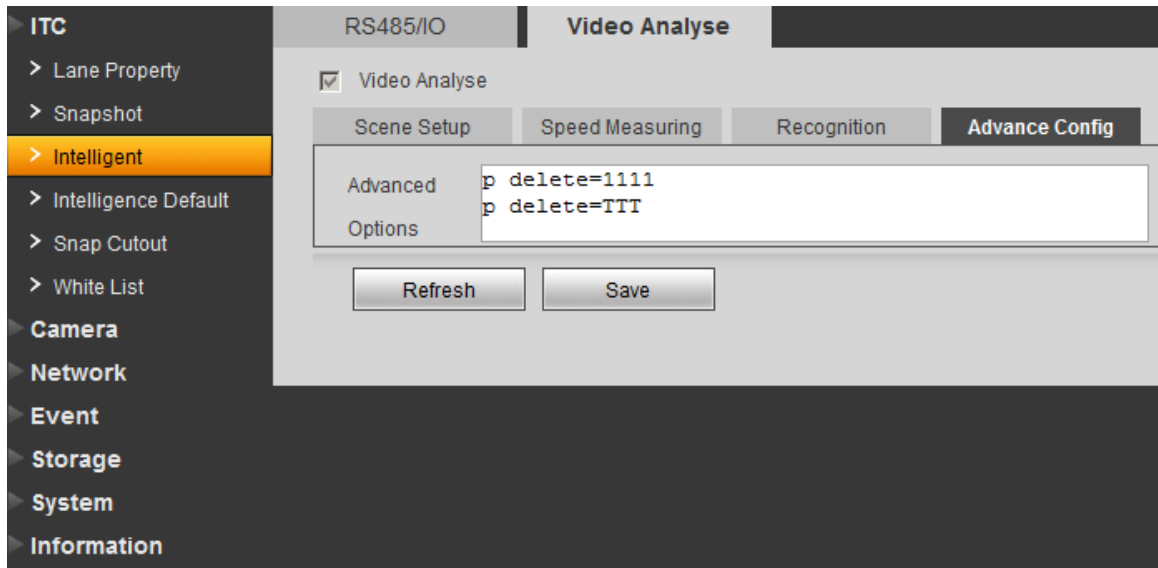


Figure 3-8 Advance Config

See Figure 3-8. Advance Options means you can input customized arithmetic expression.

3.1.4 Intelligence Default

The intelligence default interface is shown as in Figure 3-9.

Click on default to restore default settings.

Note: You cannot restore IP address and other network info.

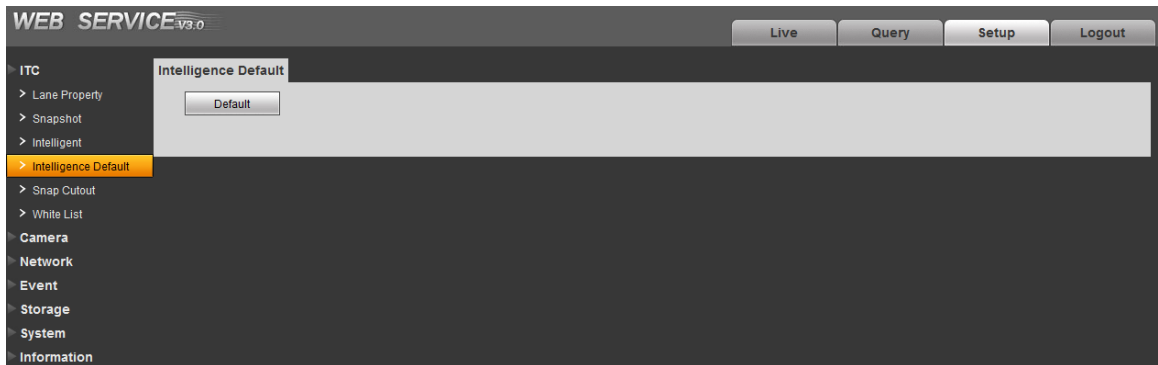


Figure 3-9 Intelligence Default

3.1.5 Snap Cutout

Check SnapCutoutEnable, click Save. System will cutout one part from snapshot and save to storage path. See Figure 3-10.

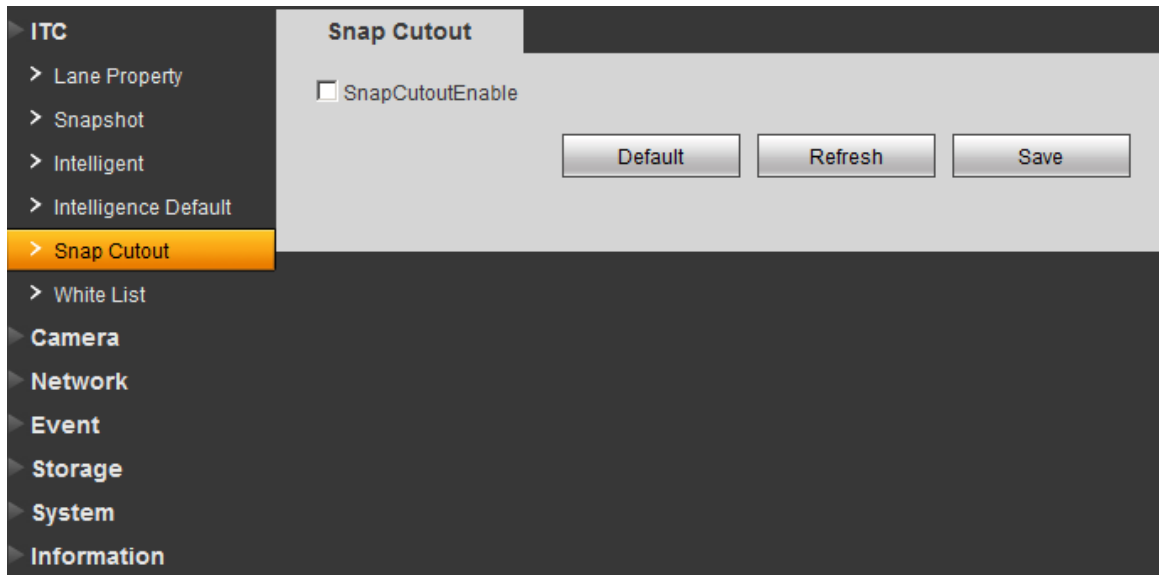


Figure 3-10 Snap Cutout

3.1.6 White List

White list is used to set open gate policy for in/out vehicle.

Open Gate Policy	Note	Operation
White list open	By importing white list plate no. and other info, open gate for vehicle matching the white list.	1.In White List Setup page, enable white list function and also enable fuzzy matching. 2.In White List Search page, import white list and property info. 3.In Link Sign Out page, enable Traffic Trust List and set alarm signal output delay.
All open	System auto opens for all in-out vehicles.	In Link Sign Out page, enable AllSnapCar and set alarm signal output delay.
Command open	If the device has connected to platform, send command via the platform to open gate.	In Link Sign Out page, enable Order and set alarm signal output delay.
Manual open	Manually open for in-out vehicles.	In Link Sign Out page, set alarm signal output delay and click Hand On.

3.1.6.1 White List Setup

The rain brush interface is shown as in Figure 3-11.

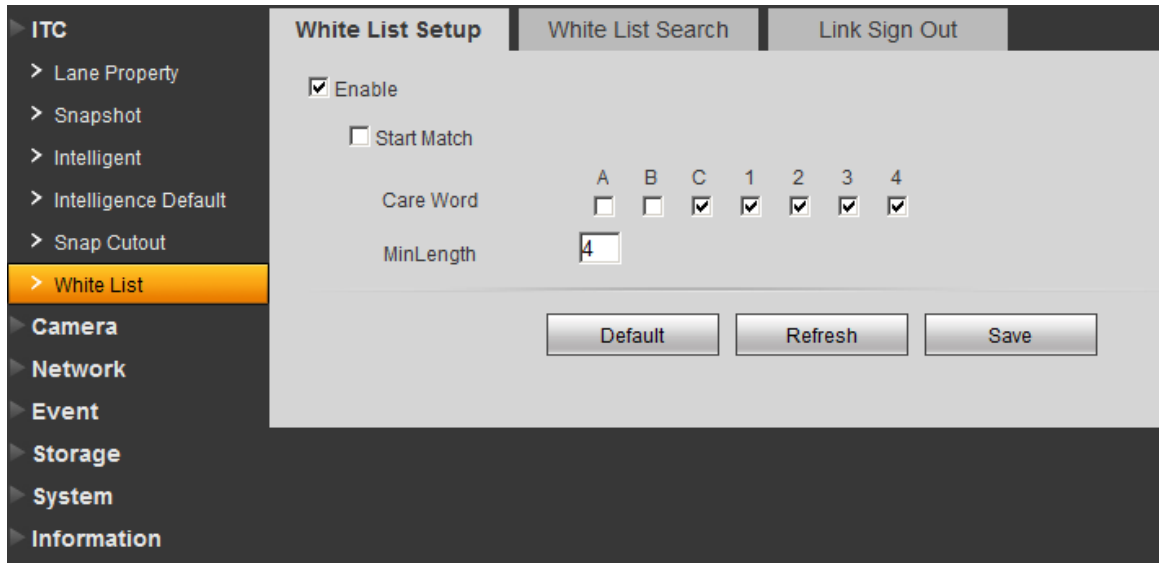


Figure 3-11 White List Setup

Please refer to the following sheet for log parameter information.


Parameter	Note
Enable	Check, enable white list function.
Start Match	After check, enable control fuzzy matching function. If the snapshot plate does not match white list, you can set white list accordingly. Plate matching fuzzy search has the same property of plate on white list. Note: Only when Traffic Trust List is enabled, fuzzy match is valid.
Care Word	Select range of plate matching characters.
Min Length	Min number of matched plate characters.

3.1.6.2 White List Search

The white list search is shown in Figure 3-12.



Figure 3-12 White List Search

Parameter	Function
Enter Plate No.	Can search s certain plate see it is on list. Note: You can click Search, and click  in search result to modify existing plate property, including start time and end time of white list right, owner and white list right.
Import white list	Import plate and etc. info.
Vehicle detained information	Select vehicle to view.
Export	Export plate and etc. info.
Add	Manually add plate info.
Clear all	Clear all white list data in device.

3.1.6.3 Link Sign Out

The link sign out interface is shown in Figure 3-13.

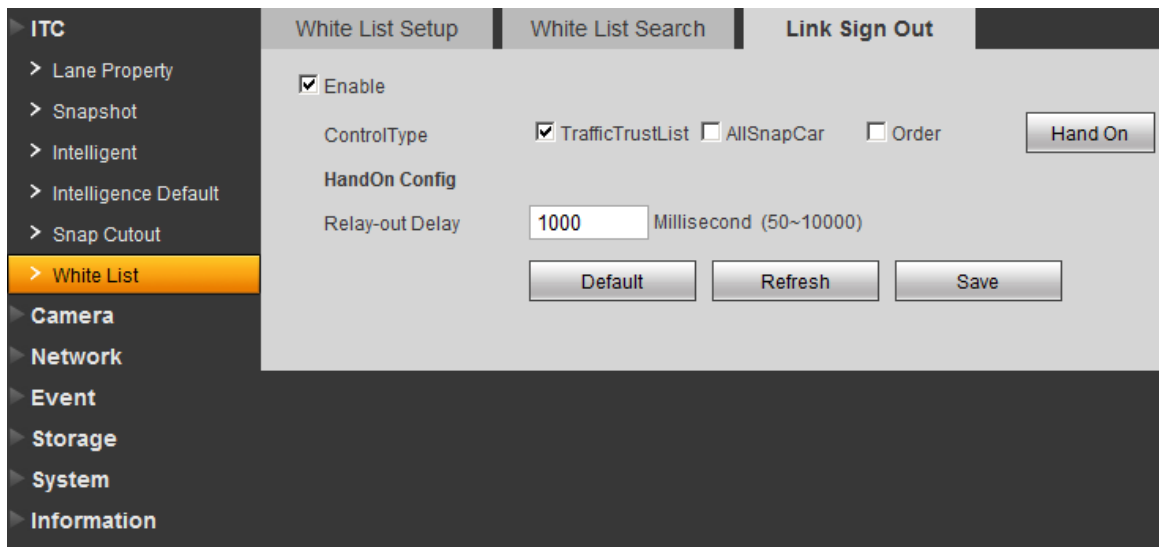


Figure 3-13 Link Sign Out

Parameter	Note
Enable	After check, enable gateway control and config.
Control Type	May trigger alarm via different gateway: <ul style="list-style-type: none"> • Traffic Trust List: snapshot vehicle matching white list or fuzzy match of white list, output open gate signal. • AllSnapCar: snapshot any vehicle, output open gate signal. • Order: platform sends command, output open gate signal.
Hand On	Click this button, manually trigger output open gate signal.
Relay-out Delay	Set alarm output delay of open gateway.

3.2 Camera

3.2.1 Attribute

3.2.1.1 General

The general interface is shown as in Figure 3-14. Here you can set camera parameters. For different models, you shall refer to its parameter. Setup in this interface comes effective immediately.

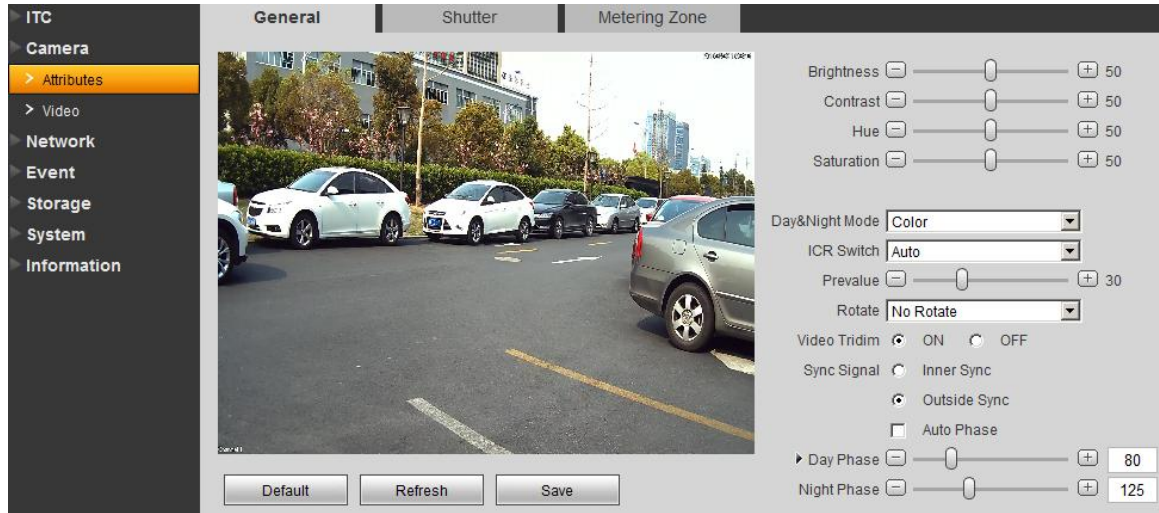


Figure 3-14 General

Please refer to the following sheet for log parameter information.

Parameter	Function
Brightness	The value adjusts brightness of full image. Default value is 50. The higher the value, the brighter the image. When image is too bright or too dark, you may adjust this value. Recommended value is 40~60 within 0~100 range.
Contrast	The value adjusts contrast of full image. Default value is 50. The higher the value, the higher the contrast of image. When contrast is insufficient, you may adjust this value. Recommended value is 40~60 within 0~100 range.
Hue	The value adjusts hue of image. Default value is 50. It will not affect image brightness. It has a relatively fixed value according to the sensor. Recommended value is 40~60 within 0~100 range.
Saturation	The value adjusts saturation of image. Default value is 50. The higher the value, the deeper the color. It will not affect image brightness. When WDB is inaccurate, this value may cause color difference in grey area. Recommended value is 40~60 within 0~100 range.
Day/Night mode	Switch of color and black&white. It includes color, by brightness and black&white.

Parameter	Function
Prevalue	Set prevalue of day/night switch.
ICR Switch	Apply to sensor IR camera, filter red light during daytime, and switch to normal light filter at night. Guarantee output of high sensitivity, clear image both at day/night time.
Retate	Normal video rotation of +90, -90 degree. Note: This model does not support this function.
Video Tridim	Check, ON, to enable 3D NR, lower noise.
Sync signal	<ul style="list-style-type: none"> ● Sync signal: Inner sync and outside sync. ● When you select outside sync, you can drag slider to set. Outside sync precedes AC sync signal. Note: <input type="checkbox"/> means current item is used.

3.2.1.2 Shutter

The shutter interface is shown as in Figure 3-15.

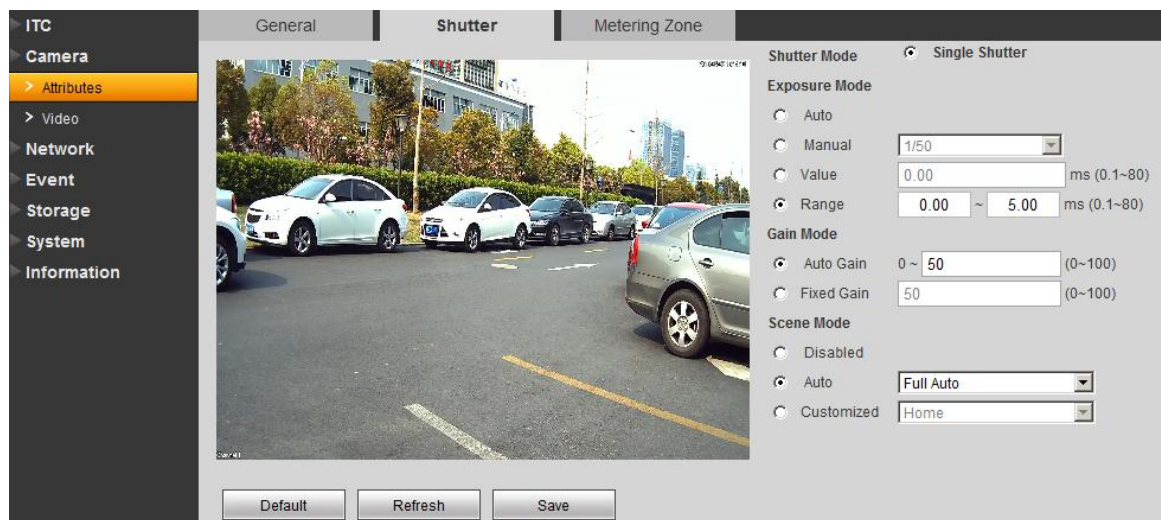


Figure 3-15 Shutter

Please refer to the following sheet for log parameter information.

Parameter	Function
Shutter mode	Select: single shutter.
Exposure mode	Select exposure mode: auto and manual. You can set manual exposure mode as 1/50~1/10000. You may also customize.

Scene mode	<ul style="list-style-type: none"> ● Select device scene mode to adjust video to best effect. ● May set auto, sunny, cloudy and etc.
Gain mode	<ul style="list-style-type: none"> ● Auto gain, if you set it to 20, auto gain will be ≤ 20. ● Fixed gain, if you set it to 20, gain will be 20.

3.2.1.3 Metering Zone

The metering zone interface is shown as in Figure 3-16.

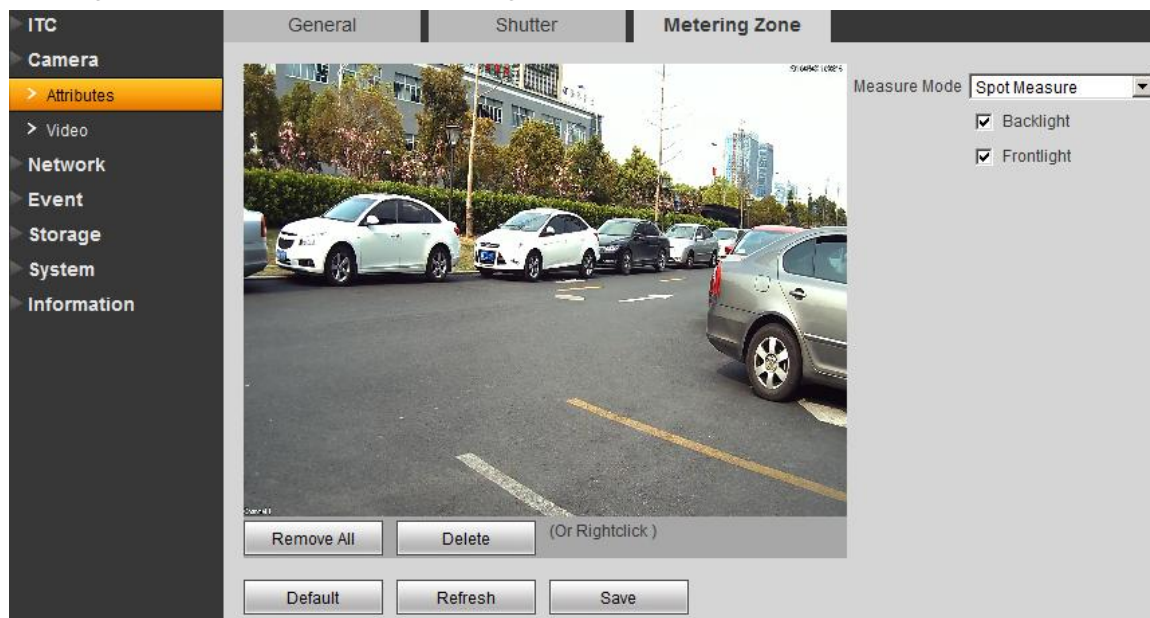


Figure 3-16 Metering Zone

Please refer to the following sheet for log parameter information.

Parameter	Function
Measure mode	<ul style="list-style-type: none"> ● Spot measure: For moving vehicle. ● Partial measure: For sensitive zone. If the zone is bright, entire zone will be dark and vice versa. ● Global measure: For set sensitive area, measure brightness, and thus adjust the entire image brightness.

3.2.2 Video

3.2.2.1 Video

The video interface is shown as in Figure 3-17.

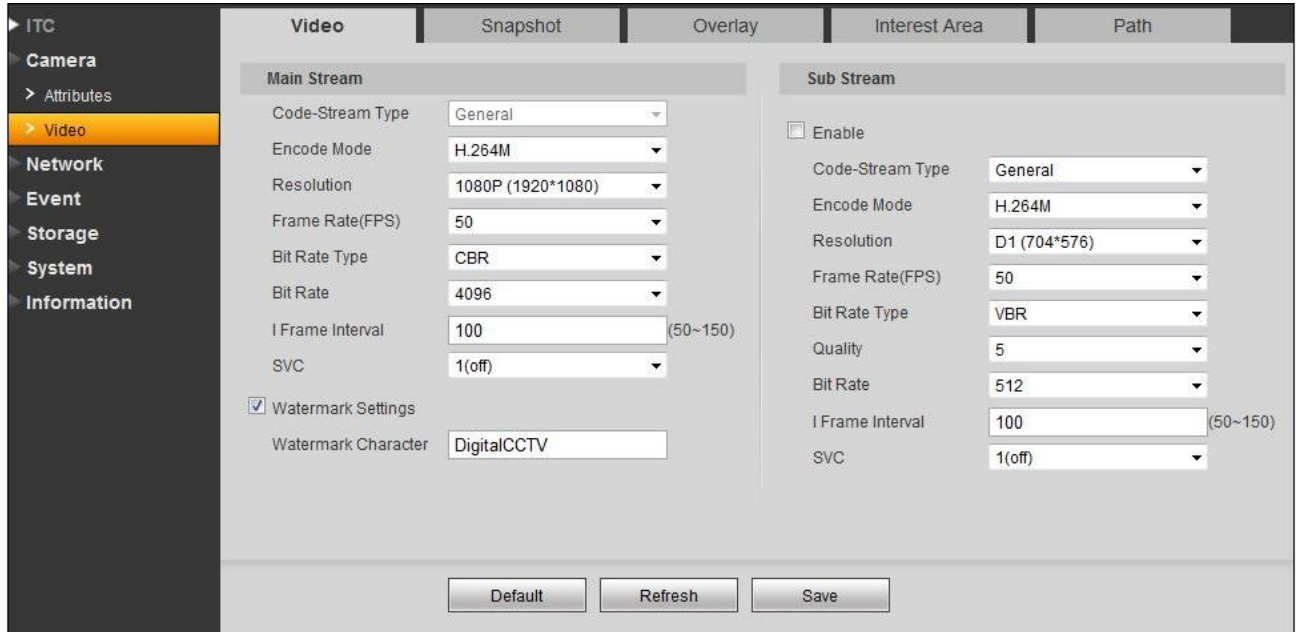


Figure 3-17 Video

Please refer to the following sheet for log parameter information.

Parameter		Function
Main stream	Code-stream type	Support general type.
	Encode mode	<ul style="list-style-type: none"> It supports H.264 only. H.264 : High Profile encode.
	Resolution	Display resolution, support 1080P (1920*1080)
	Frame rate (FPS)	Max support 50 fps.
	Bit rate type	It includes: CBR and VBR. Under VBR, you can set image quality.
	Bit rate	<ul style="list-style-type: none"> Under VBR, this value serves as upper limit. Under CBR, this value is fixed. It is the best range of bit rate.
	I frame interval	It is the P frame between two I frame, with range 1~150. Default is two times frame rate.
	Watermark settings	By verifying watermark character, you may check if record is edited. Check front box to enable function. Default watermark character is: DigitalCCTV. Only number, letter, and underline are supported, max 85 characters.

3.2.2.2 Snapshot

The snapshot interface is shown as in Figure 3-18.

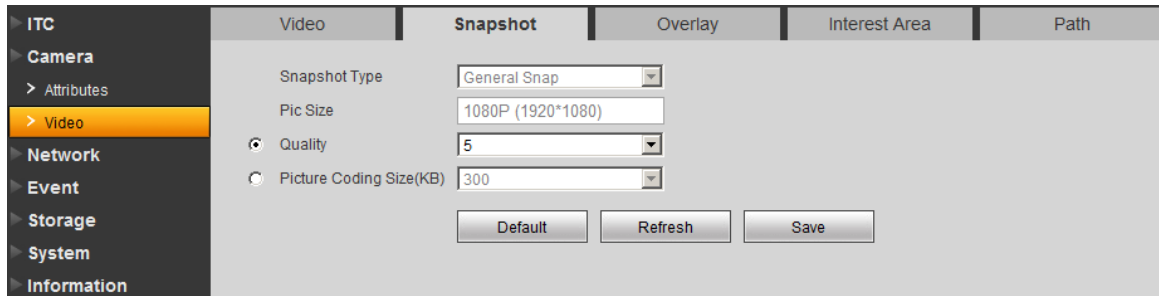


Figure 3-18 Snapshot

Please refer to the following sheet for log parameter information.

Parameter	Function
Snapshot type	It includes general snap and trigger snap. General snap works within predetermined time period. Trigger snap works at time of motion detect, privacy masking and relay activation. Note: This device does not support this function.
Pic size	Be consistent with main stream resolution. Note: This device does not support this function.
Quality	Select snap quality from 6 levels.
Picture coding size	Set picture coding size.

3.2.2.3 Overlay

The overlay interface is shown as in Figure 3-19.

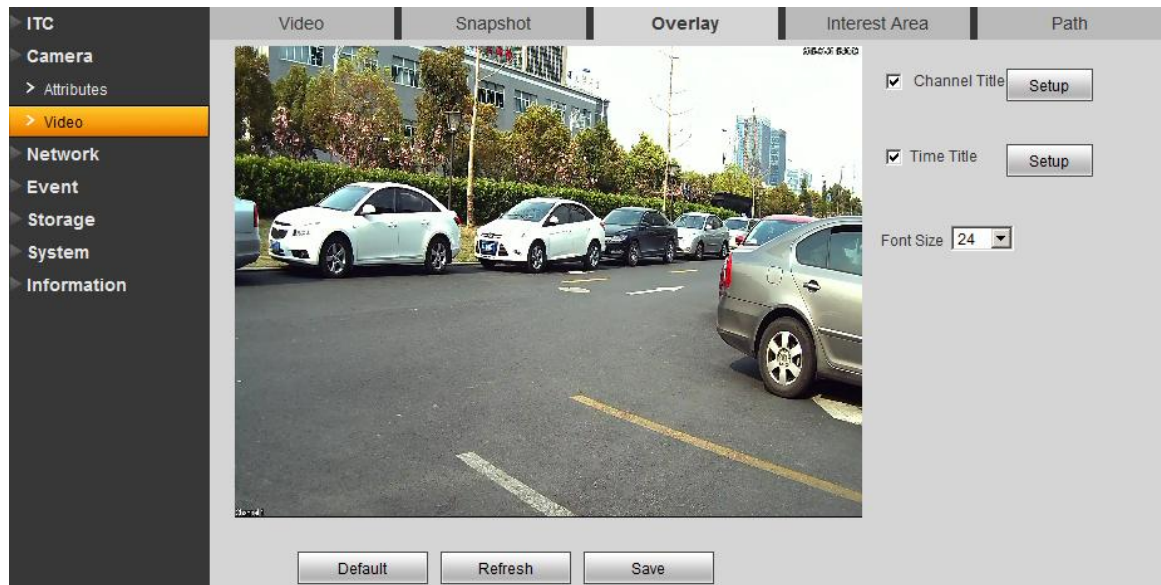


Figure 3-19 Overlay

Please refer to the following sheet for log parameter information.

Parameter	Function
Time title	<ul style="list-style-type: none"> • Enable this function to display time title. • Enable and click on setup to set. You may drag time title in window to choose its position.
Channel title	<ul style="list-style-type: none"> • Enable this function to display channel title. • Enable and click on setup to set. You may drag channel title in window to choose its position.
Font size	<ul style="list-style-type: none"> • Set channel and time title font size.

3.2.2.4 Interest Area

The interest area interface is shown as in Figure 3-20.

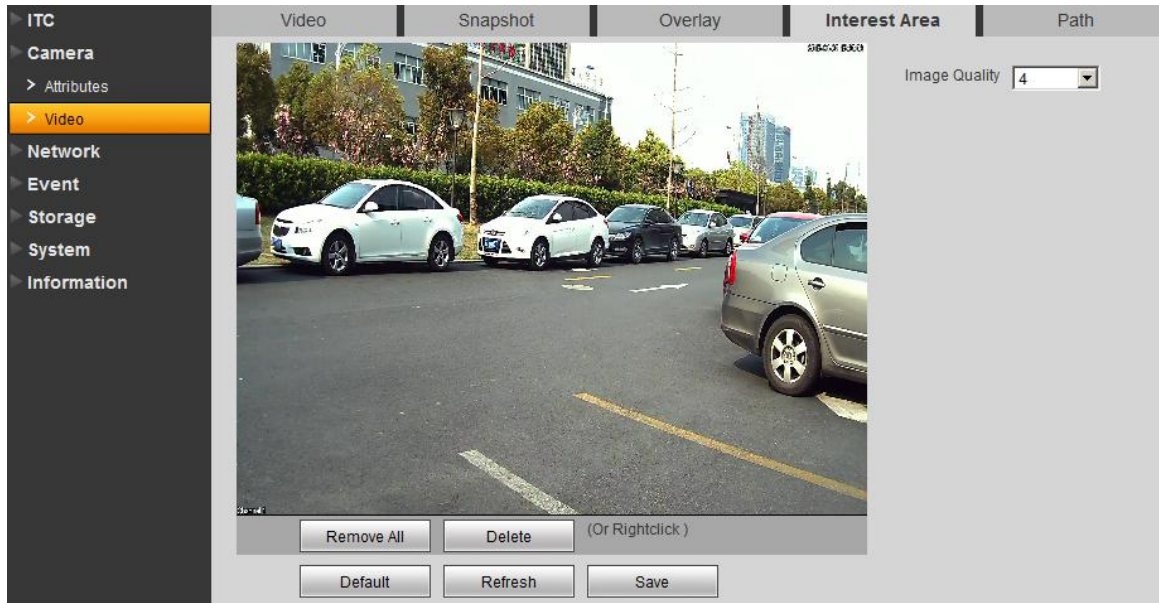


Figure 3-20 Interest Area

Please refer to the following sheet for log parameter information.

Parameter	Function
Image quality	<ul style="list-style-type: none"> You may drag left mouse to set interest area. Select snap quality from 6 levels.

3.2.2.5 Path

The path interface is shown as in Figure 3-21.

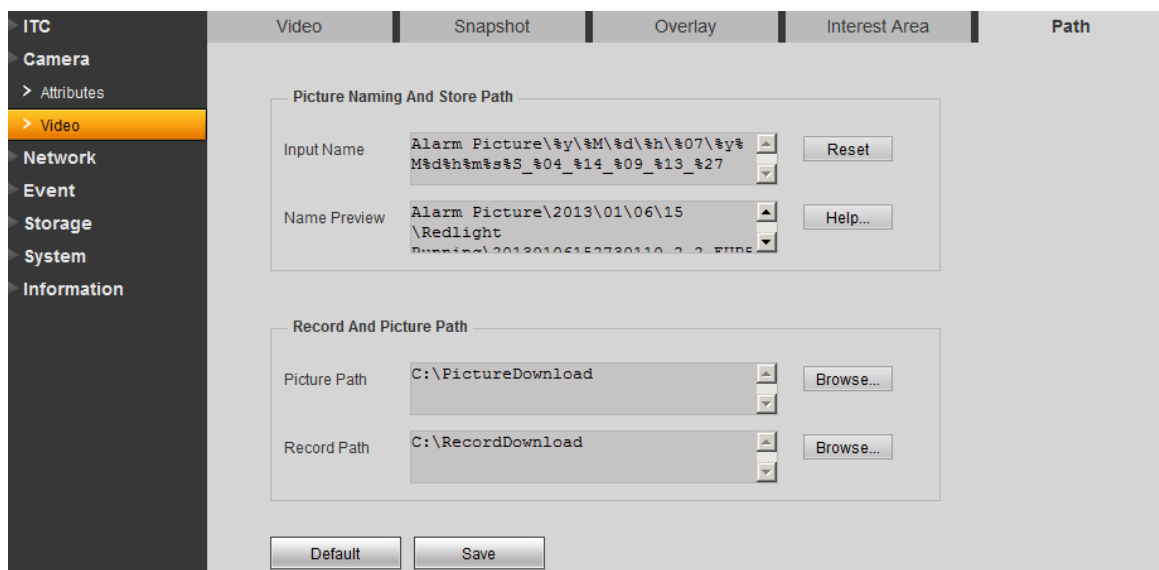


Figure 3-21 Path

You can set snapshot path and record path.



Snap default path is: C:\PictureDownload.



Record default path is: C:\RecordDownload.

3.3 Network

3.3.1 TCP/IP

The TCP/IP interface is shown as in Figure 3-22.

Figure 3-22 TCP/IP

Please refer to the following sheet for log parameter information.

Parameter	Function
Host name	Set current host name. Max supports 32 characters.

Parameter	Function
Ethernet card	Set Ethernet card to config. Default is wired.
Mode	You can select from static and DHCP mode. In DHCP mode, it automatically search IP while you cannot set IP/subnet mask/gateway. Plus IP/subnet mask/gateway display values from DHCP. In static mode, you shall manually set IP/subnet mask/gateway. To switch from DHCP to static, you must set IP parameters again.
MAC address	Display host MAC address.
IP version	Select IP version IPV4 or IPV6. These two IP addresses both can be accessed.
IP address	Input new IP address to edit, and set subnet mask and default gateway.
Preferred DNS	DNS server IP address.
Alternate DNS	DNS server alternate IP address.

3.3.2 IP Filter

The IP filter interface is shown as in Figure 3-23.

You may set trusted list and banned list to allow or prohibit user login.

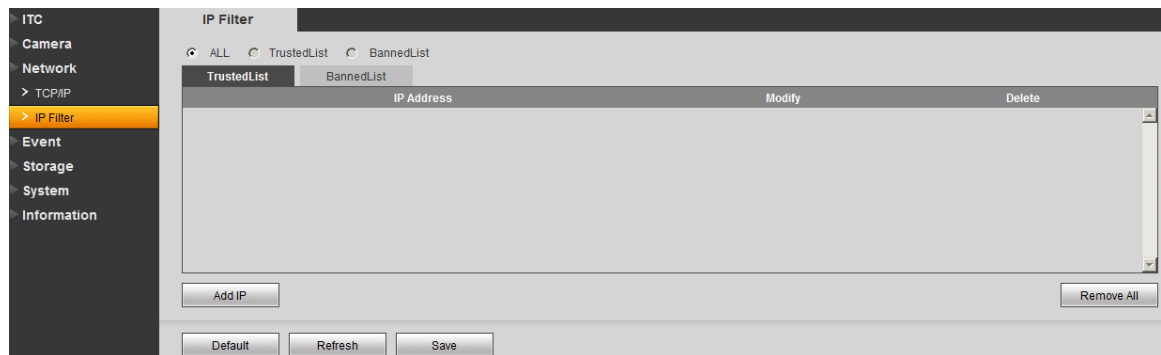


Figure 3-23 IP Filter

3.4 Event

3.4.1 Relay-out

The relay-out interface is shown as in Figure 3-24.



Figure 3-24 Relay-out

Please refer to the following sheet for log parameter information.

Parameter	Function
1	1-ch relay out setup. "1" means alarm output channel. Select "1" and trigger, then directly output alarm output signal.
Refresh	View the latest relay out status.

3.4.2 Abnormity

The abnormity interface is shown as in Figure 3-25.

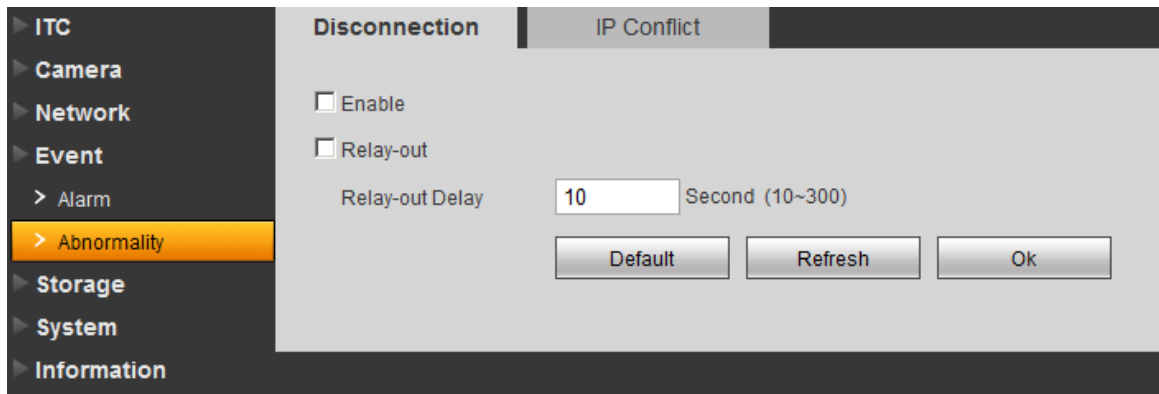


Figure 3-25 Disconnection

Please refer to the following sheet for log parameter information.

Parameter	Function
Enable	Check box to enable this function.
Relay-out	When alarm occurs, set corresponding relay out. You must enable this function first.

Parameter	Function
Relay-out delay	Alarm will continue for X seconds after motion detect ends. You can set X within 10 s~300 s.

3.5 Storage

Select FTP as storage, then FTP is enabled. You can set picture name and path. Click Help to view rule of naming.

The FTP interface is shown as in Figure 3-26.

Figure 3-26 Path

3.6 System

3.6.1 General

The general interface is shown as in Figure 3-27.

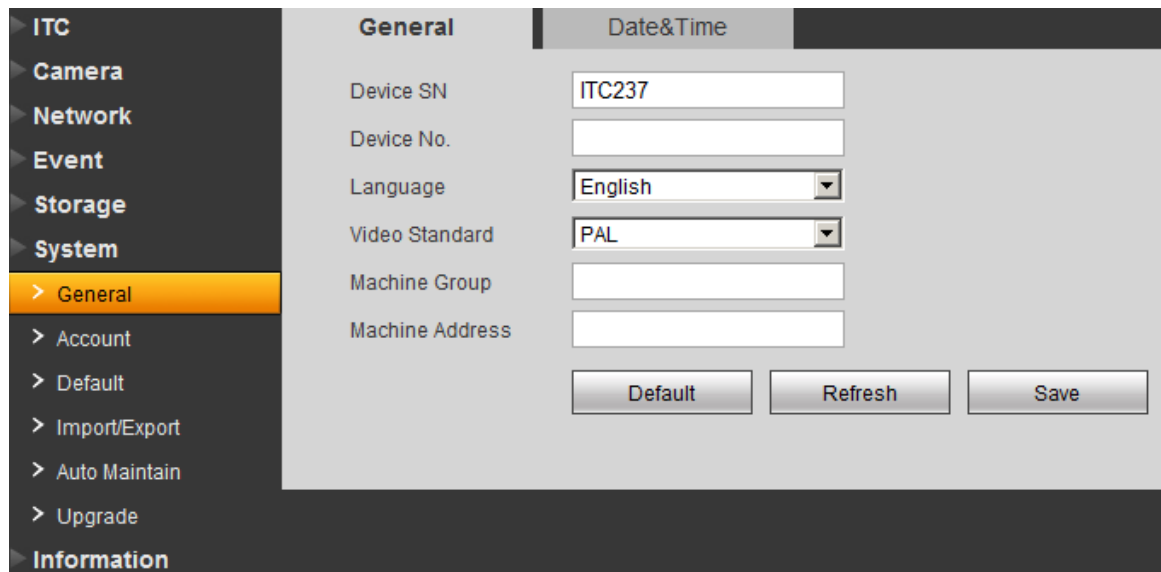


Figure 3-27 General

Please refer to the following sheet for log parameter information.

Parameter	Function
Device name	Set device name.
Language	Select language and then close IE. When you log in again, system language will change.
Video standard	Display device video standard, such as PAL.
Machine Group	Input device group.
Machine Address	Input snapshot address of the device.

The date&time interface is shown as in Figure 3-28.

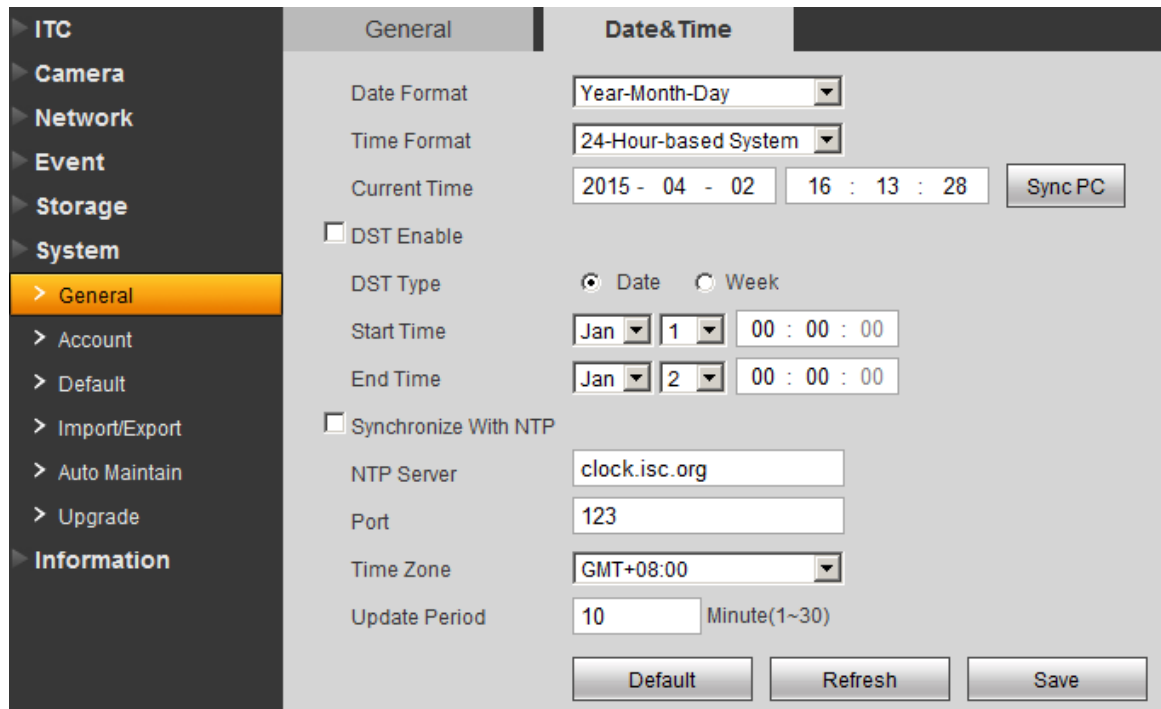


Figure 3-28 Date&Time

Please refer to the following sheet for log parameter information.

Parameter	Function
Date format	Select date format.
Time format	Select time format.
Current time	Set current system time. Setup becomes effective immediately.
Sync PC	Sync system time with PC time. Click on save to refresh system time.
DST enable	Set DST, may by date or week. Setup becomes effective immediately.
Synchronize With NTP	Check to sync with NTP.
NTP server	Set NTP server address.
Port	Set NTP port no.
Time zone	Set device time zone.
Update period	Set device update period.

3.6.2 Account

Note:

- Account has two levels as group and username. Group supports max of 8 and username supports max of 18. Default group includes admin and user.
- Group name cannot be repeated. Each user belongs to one group only. You may add and delete group and set group. User right within a group can be customized as long as within right of the group.
- Username and group names support max length of 15 characters which can be letter, number, underline and dash.

3.6.2.1 Account

The account interface is shown as in Figure 3-29. Here you can add and delete username, and modify user password.

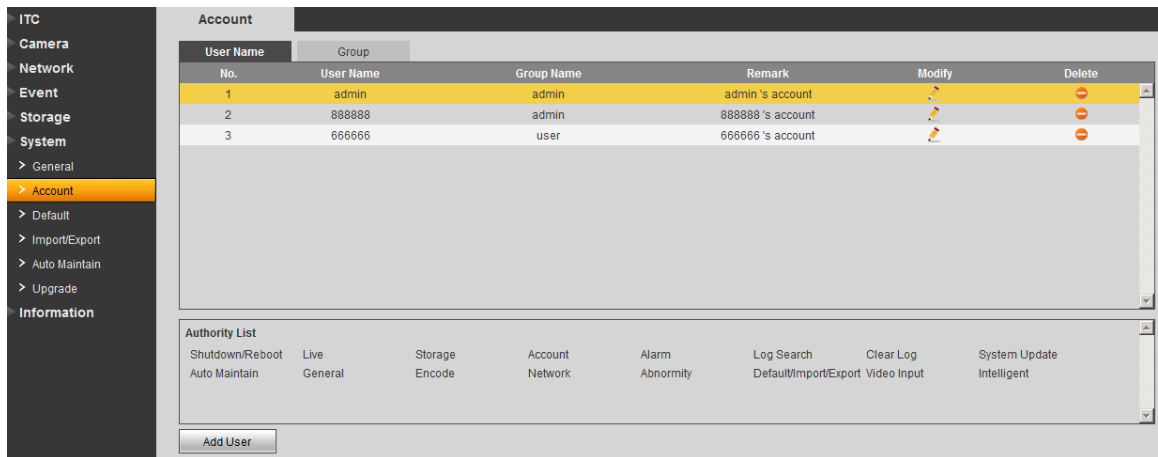


Figure 3-29 Account

Anonymous login: Enable anonymous login as input IP without username and password to log in device. This type of account only have preview right. You may switch to other account by clicking on logout.

Add user: Add user within group and set user right.

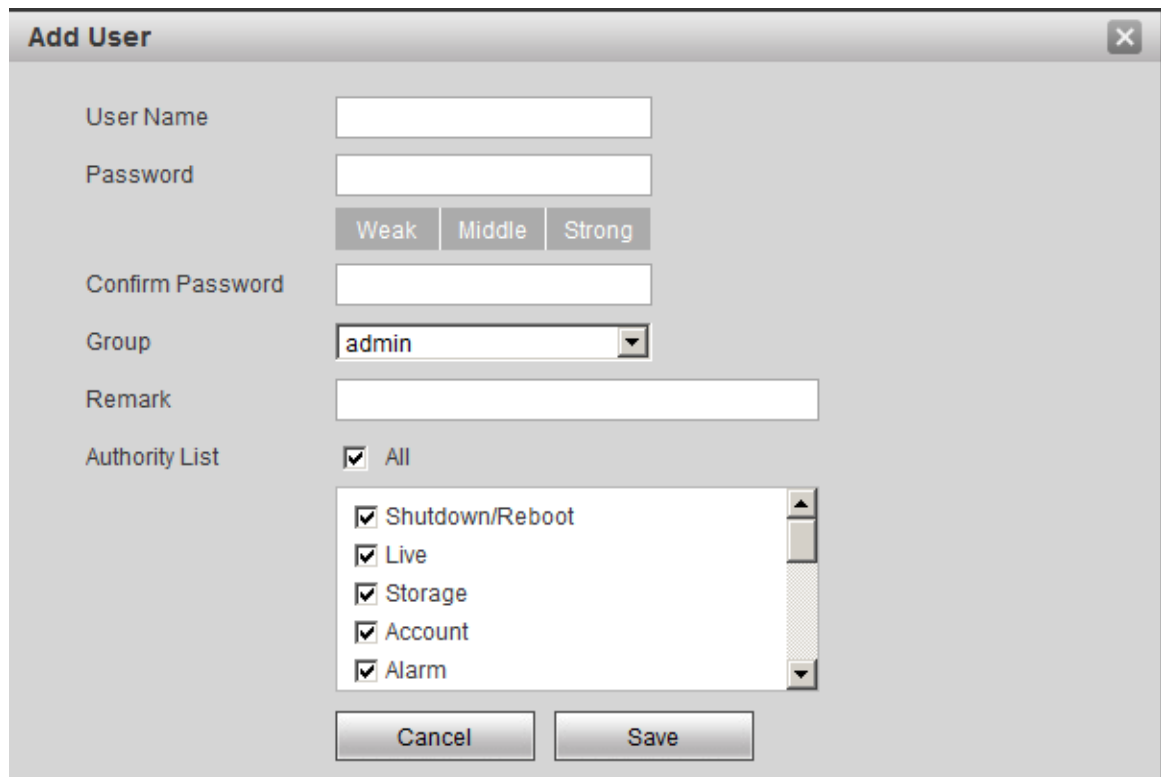
By default there are three users: admin, 888888 and 666666. Their passwords are the same as corresponding username. Admin and 888888 are admin account by default while 666666 is user account which has monitor right only.

Enter add user interface, input username and password, and select its group.

Username shall not exceed right of its group.

We recommend you to set user right lower than admin right.

The add user interface is shown as in Figure 3-30.



The image shows a dialog box titled "Add User" with a close button in the top right corner. The dialog contains the following fields and controls:

- User Name:** A text input field.
- Password:** A text input field with three buttons below it: "Weak", "Middle", and "Strong".
- Confirm Password:** A text input field.
- Group:** A dropdown menu with "admin" selected.
- Remark:** A text input field.
- Authority List:** A list of permissions with checkboxes:
 - All
 - Shutdown/Reboot
 - Live
 - Storage
 - Account
 - Alarm

At the bottom of the dialog are two buttons: "Cancel" and "Save".

Figure 3-30 Add User

Modify user: Modify existing user's group, password, right and note. See Figure 3-31.

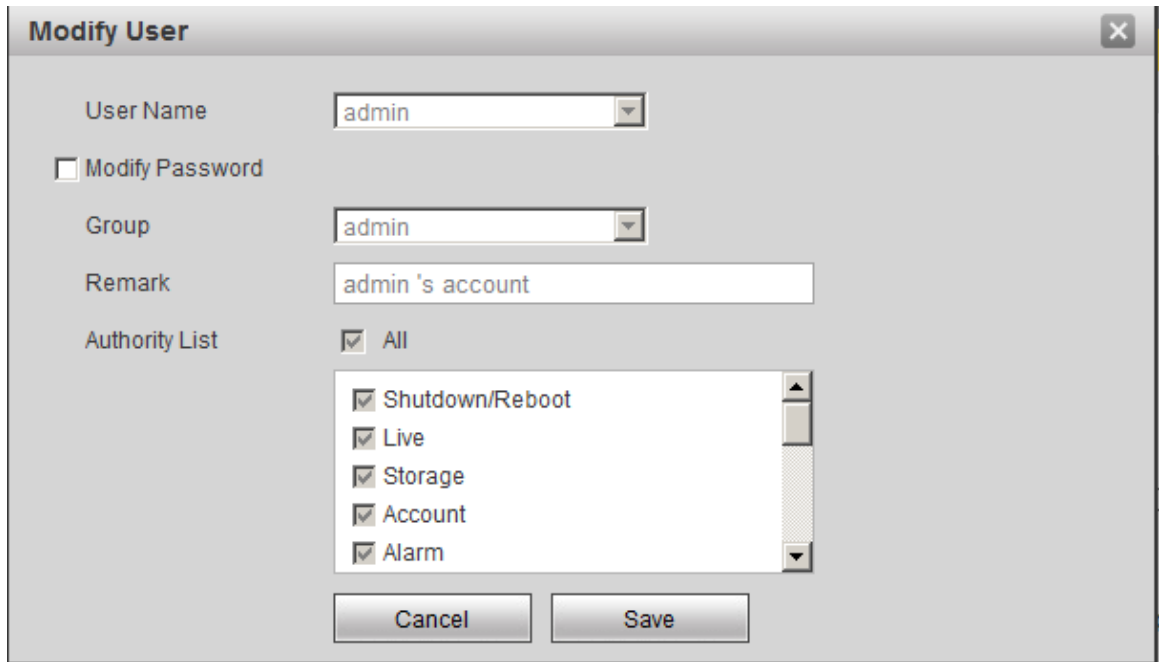


Figure 3-31 Modify User

Modify password: Modify password of existing user. Check box in front of modify password. Input current password and then input new password. Click on save. Password supports 0~15 characters, including letter and number only.

Note:

- You cannot modify right of the logged in account.
- You cannot modify or delete admin, 888888 and 666666 accounts.
- Account who has right to modify other account, can modify other user account besides its own.
- You cannot delete currently logged in account.

3.6.2.2 Group

The group interface is shown as in Figure 3-32. Here you can add and delete group, and modify group password.

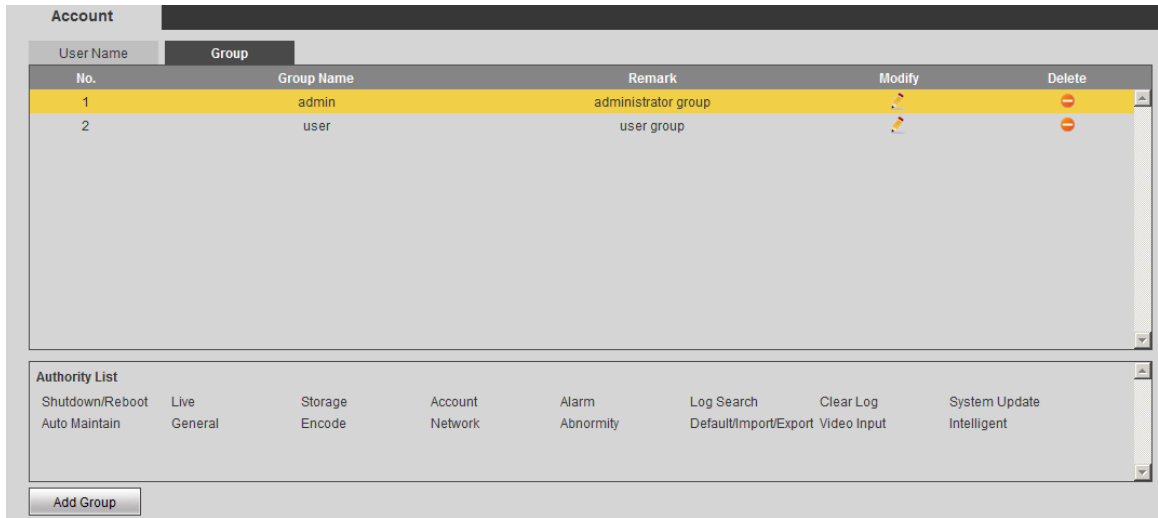


Figure 3-32 Group

Add group: Add user within group and set group right.

Enter add group interface, and input group name, select right among given list. The add group interface is shown as in Figure 3-33.

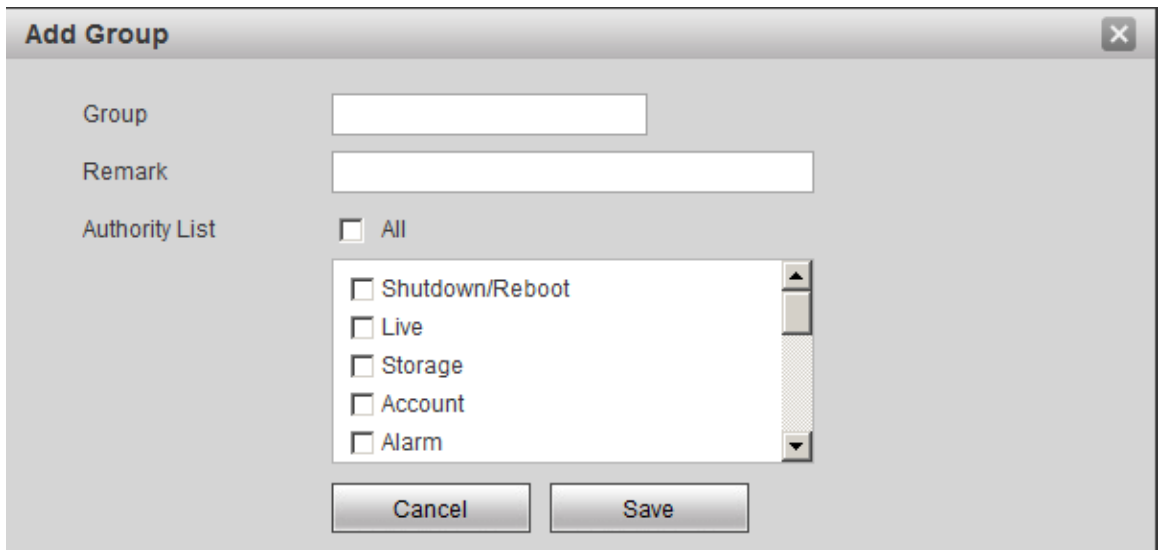


Figure 3-33 Add Group

Modify group: Click on modify, you may edit group in prompt box. The modify group interface is shown as in Figure 3-34.

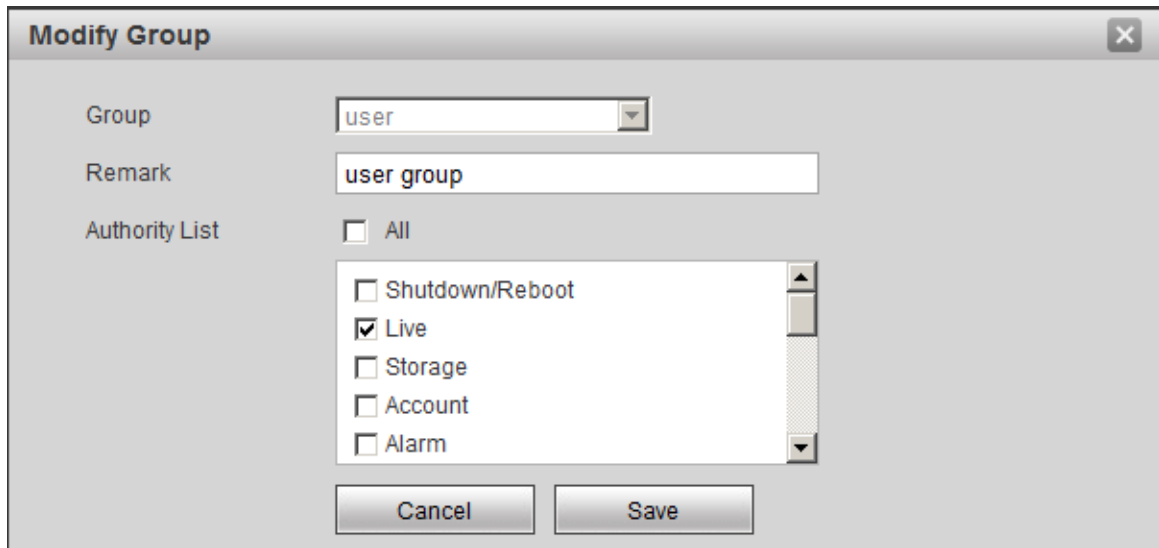


Figure 3-34 Modify Group

Note:

- You cannot delete admin and user groups.
- You cannot delete group which contains currently logged in user.

3.6.3 Default

The default interface is shown as in Figure 3-35.

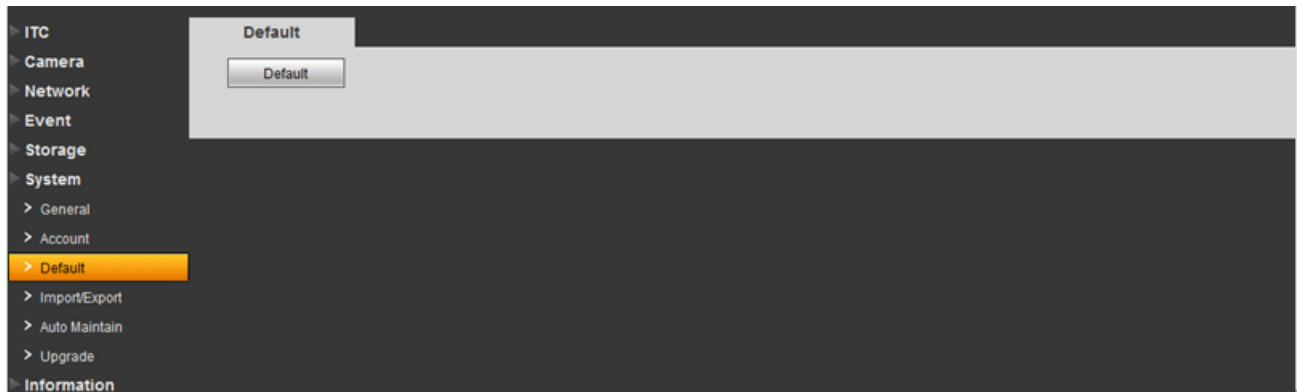


Figure 3-35 Default

Note: Network IP address cannot be restored to default.

3.6.4 Import/Export

The import/export interface is shown as in Figure 3-36.

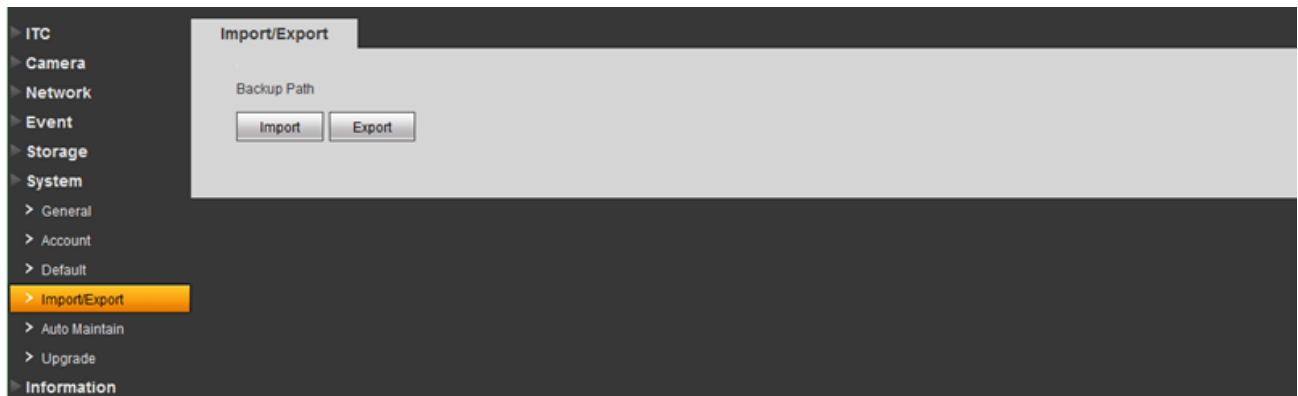


Figure 3-36 Import/Export

Please refer to the following sheet for log parameter information.

Parameter	Function
Export	Export system config to local.
Import	Import local config to system.

3.6.5 Auto Maintain

The auto maintains interface is shown as in Figure 3-37.

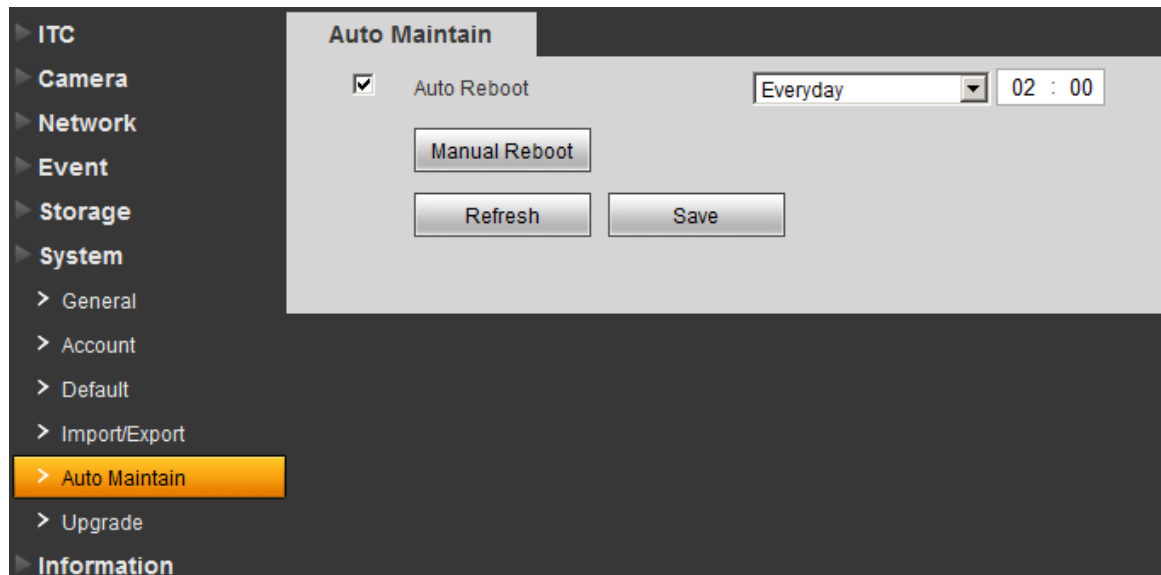


Figure 3-37 Auto Maintain

User can automatically reboot system and delete old files. You shall set auto reboot schedule and set file time period for auto delete old file to delete file within certain time periods. Click on save to make setup effective.

3.6.6 Upgrade

When system upgrades, you shall select firmware file. Firmware file ends in *.bin. Please maintain stable power supply, connection and do not reboot or shut down camera during this process.

The upgrade interface is shown as in Figure 3-38.

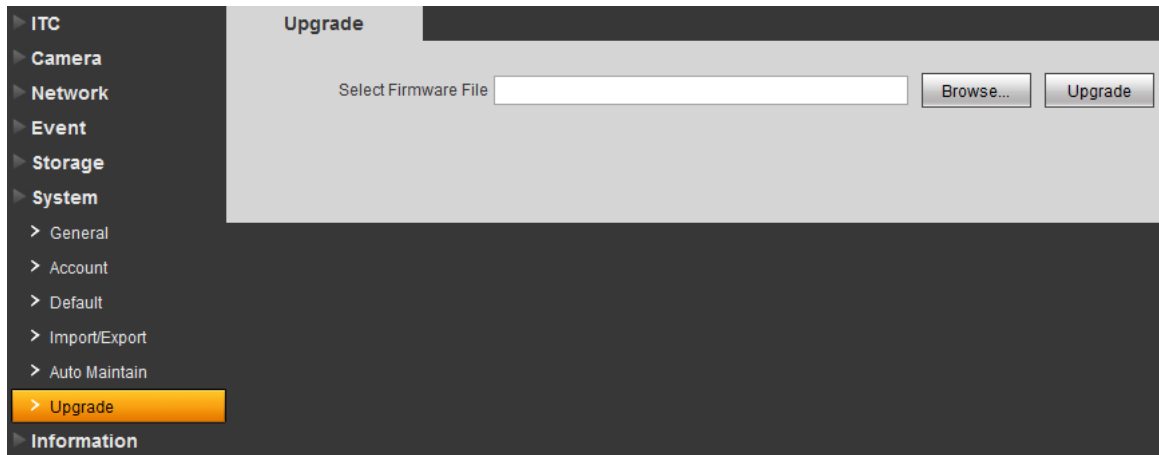


Figure 3-38 Upgrade

Note: If system encounters error during upgrading, the device may malfunction.

3.7 Information

3.7.1 Version

The version interface is shown as in Figure 3-39.

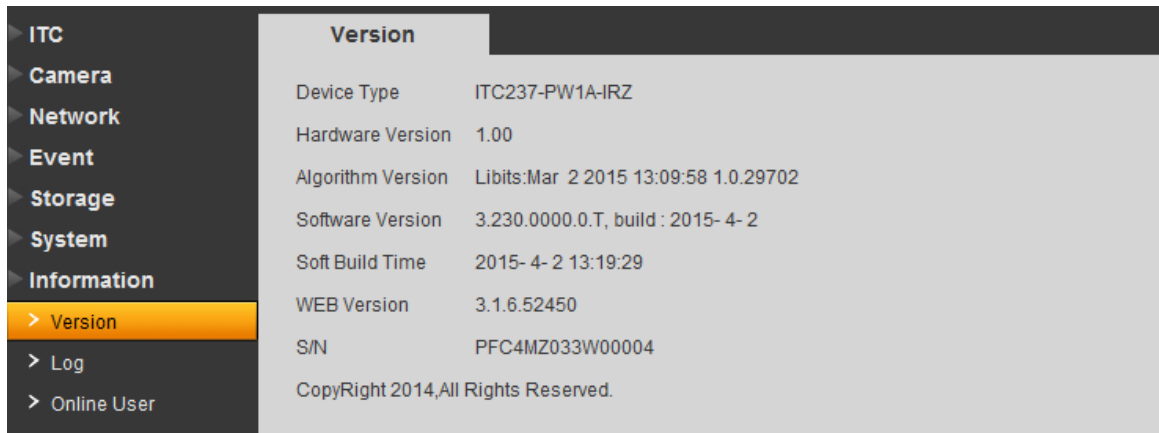


Figure 3-39 Version

Here displays device type, software version and soft build time. All info here subject to actual condition.

3.7.2 Log

The log interface is shown as in Figure 3-40.

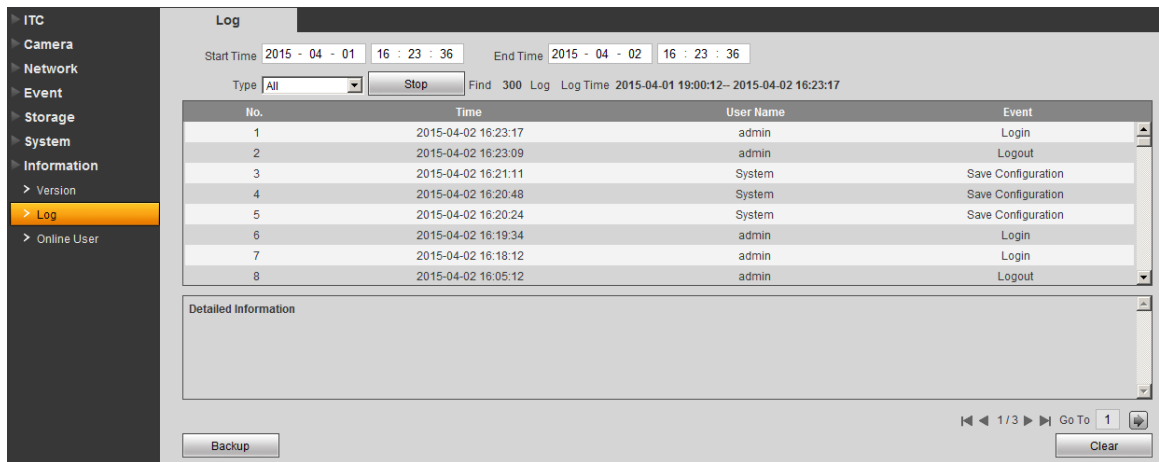


Figure 3-40 Log

Please refer to the following sheet for log parameter information.

Parameter	Function
Start time	Set start time of log to search.
End time	Set end time of log to search.

Parameter	Function
Type	Log type includes: system, config, data, event, record, account and clear all log.
Search	<ul style="list-style-type: none"> In dropdown list, select log type, and set start/end time. Click on search button and then you will see logs searched out. Click on stop to stop log search.
Detailed info	Click on log to view its detailed information.
Clear	Clear all system log displayed. You cannot clear log by type.
Backup	Create backup of displayed log onto current used PC.

3.7.3 Online User

The online user interface is shown as in Figure 3-41. Here displays online user and their group, IP address and login time.

The screenshot shows a web interface with a sidebar on the left containing navigation items: ITC, Camera, Network, Event, Storage, System, Information, > Version, > Log, and > Online User (highlighted in orange). The main content area is titled 'Online User' and contains a table with the following data:

No.	User Name	User Local Group	IP Address	User Login Time
1	admin	admin	172.32.4.164	2015-04-02 13:41:38
2	admin	admin	10.33.4.38	2015-04-02 14:20:03
3	admin	admin	10.34.12.31	2015-04-02 16:18:12
4	admin	admin	10.34.12.6	2015-04-02 16:23:17

Below the table is a 'Refresh' button.

Figure 3-41 Online User

4 Logout

Single click on logout to exit WEB interface. You will see Figure 4-1. To return web interface, you have to log in again.

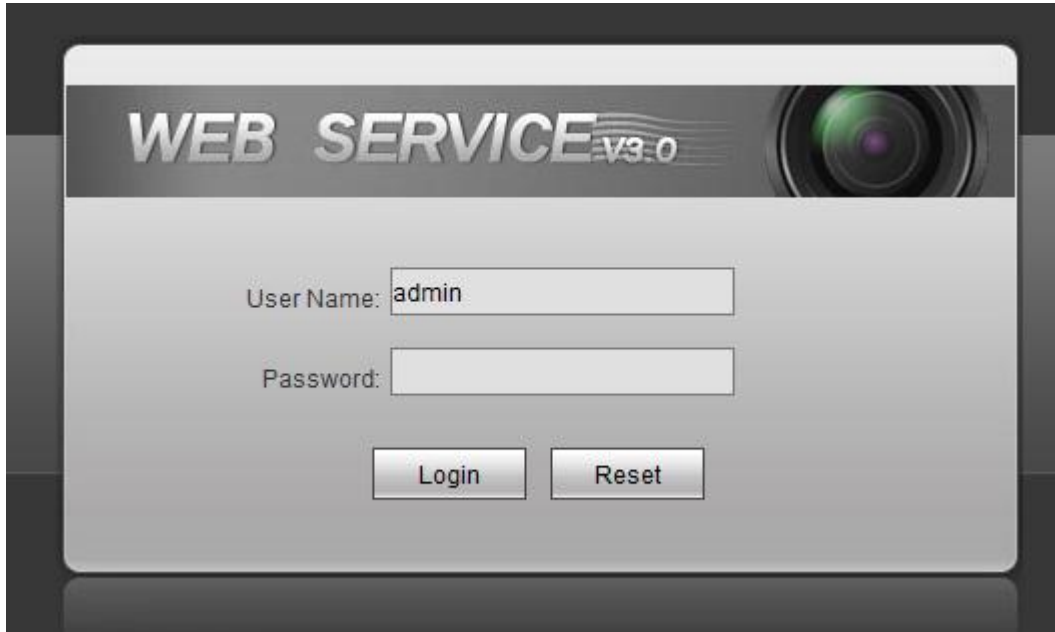


Figure 4- 1 Logout

Note:

- This manual is for reference only. Slight difference may be found in the user interface.
- All the designs and software here are subject to change without prior written notice.
- All trademarks and registered trademarks mentioned are the properties of their respective owners.
- If there is any uncertainty or controversy, please refer to the final explanation of us.
- Please visit our website or contact your local retailer for more information.